

SIBLING

OLD BEGA HOSPITAL

ADAPTIVE RE-USE
AU-769890



Architecture
Interiors
Landscape Architecture
Urban Design

Melbourne
Sydney

www.siblingnation.net

CONTACT

Nicholas Braun
+61 406 532 997
nick@siblingnation.net

CONTENTS

1. Introduction
2. Sibling Architecture Profile
3. Environmentally Sustainable Design
4. Design Team Capabilities
5. Personnel
6. Collaboration
7. OH & S
8. Brief
9. Relevant Project Experience
10. Site Opportunities, Process and Methodology
11. Pricing Proposal
12. Awards and Prizes
13. Conclusion



All Ages Living Development

1. INTRODUCTION

Dear Old Bega Hospital,

We are very pleased to provide this service proposal for your exciting new venture within the Bega region. The new adaptive re-use of the Old Bega Hospital will not only rejuvenate this particular site within the region, but it will also become the central hub of important social and community groups which are key to a thriving community.

We are a young and exciting architectural and design firm and we believe that every project we undertake has the ability to greatly impact and inspire the people who encounter them. What sets us apart is that no matter what the typology or brief, we will respond in a playful and inventive way that does more than just meeting criteria and budget, we will exceed all expectations.

Last year we were recognised for our design excellence and received numerous state and nation wide design awards.

We have experience in completing a wide range of projects at this scale. Our keen interest in designing spaces that integrate both natural and constructed environments, and our expertise in designing socially engaged spaces makes us the perfect candidate for this job.

Within this document you will find example to meet the tender criteria, and supporting documentation, a practice profile that summarises our capabilities, methods and experience, as well as a selection of our projects that you may find of interest.

Please don't hesitate to let us know if you have any questions or comments on anything within this document.

With regards,

Nicholas Braun

2. SIBLING PROFILE

Practice Profile

SIBLING is an award winning, multi-disciplinary design group that produces innovative and creative projects with a focus on socially-engaged outcomes. SIBLING is unique amongst its peers, we produce design from within a participatory and research based studio environment, merging our large-scale capabilities and experience with the adaptability, innovative culture and individual client focus of a smaller practice. SIBLING culture is energetic, multifaceted, open-minded and one that cultivates a desire for intellectual challenge and problem solving. SIBLING understand changing technologies and changing economies and provide innovative solutions for changing and innovative businesses.

We actively engage in and promote discourse within both the creative and broader community, through a variety of activities including international and local art and cultural events, contribution to architectural and landscape publications and roles in education within The University of Melbourne, RMIT, and Monash University.

Prior to establishing SIBLING, members had extensive local and international professional experience, working for Bjarke Ingels Group (Copenhagen), Smaq (Berlin), Dosmasuno Arquitectos (Madrid), MRT (Shanghai), 6 Degrees Architects (Melbourne), Archis/Volume Magazine (Amsterdam), Grimshaw (Sydney) BKK Architects (Melbourne) and McBride Charles Ryan Architects (Melbourne) amongst others.



Regional Art Museum

3. ENVIRONMENTALLY SUSTAINABLE DESIGN

Environmentally Sustainable Design

All practice directors and staff are trained in the principles of Environmentally Sustainable Design (ESD), the consideration of which is tightly interwoven throughout the entire team's design process. Indeed, all practice directors have taken leadership roles in the development of ESD principles within the respective professional communities and all staff members undertake continuing education to maintain their skills in this increasingly critical area. SIBLING directors regularly sit on the jury for the Sustainability Award for the AIA Awards.

Latest Technologies

As technical tools form the key to the actual realisation of the design concept, SIBLING are continually integrating the best in current and emerging technologies in the delivery of projects. For instance, our innovative use of state-of-the-art computer aided design, documentation and communication tools allows efficient exploration of the possibilities of building technology and materials within the design phase of projects. This not only benefits the quality of the design outcome, but also accelerates the process of identification and moderation of risk within the implementation phase.



Mr. Brightside Cafe

4. DESIGN TEAM CAPABILITIES

Our Creative Philosophy

SIBLING's creative philosophy is embodied within our design process, where our core objective is to create beautiful socially engaged design outcomes.

We recognise an emergent economy that is driven by the necessity for social interaction and exchange. SIBLING utilises architecture as the physical device to enable what we call the social economy. As architects and designers, we hope to design spaces that are fun and enjoyable, provoke interest to engage and connect users to foster a social exchange. We cultivate this economy of social exchange because we hope that it builds a more positive and inclusive future.

Our design process is highly fluid and unrestrictive. It commences with an assemblage of concepts, scales and constraints which are then progressed via a disciplined, yet unrestrictive process of distillation. This process welcomes collaborative input and new possibilities at all stages to arrive at a pivotal theme or idea. From this conceptual focal point, the architecture then evolves and expands naturally. The resultant design methodology is dynamic, non-prescriptive and exciting, often resulting in unexpectedly enriched outcomes.

Personnel

SIBLING recognise that the value inherent in technological and process tools can only be extracted through the project team that wields them. Therefore, staff members are carefully selected on the basis of their technical expertise and experience and how they may complement our existing capabilities. Equally, an aptitude for lateral thought and a passion for cultural and creative innovation are considered critical assets. The same criteria are also applied to the choice of external consultants with whom we develop ongoing relationships.



Port Fairy Development

5. PERSONNEL

Nicholas Braun - Founding Director, Registered Architect

Nicholas is both an architect and landscape architect. He has led a variety of SIBLING projects, specialising in the design and delivery of SIBLINGs public landscape spaces. He was the lead design on both the Dreamspace Station, White out at Federation Square and is currently working on a number of residential projects which include large scale landscape works.

With a Masters in Architecture and Bachelor of Landscape Architecture, Nicholas' expertise spans both professions. His career has spanned across a range of scales in both Melbourne and Sydney where he was part of the winning Barangaroo (East Darling Harbour) team from Aspect Studios in association with Roger Stirk Harbour Architects. Upon returning to Melbourne, Nicholas has worked as an architectural designer and project manager at Grimshaw architects across housing, retail and commercial projects.

Nicholas is involved in teaching design and construction at Monash University and The University of Melbourne across both Architecture and Landscape Architecture disciplines.

Qianyi Lim - Founding Director, Registered Architect

Qianyi is currently managing a variety of exciting public and institutional projects at SIBLING. She recently managed the successful completion of the Gertrude Glasshouse Gallery and a number of projects underway for Monash University. Qianyi also leads the Sydney operation of Sibling Architecture

Qianyi's professional and academic experience has extended beyond Melbourne to Shanghai, Madrid and Denmark. Qianyi has worked at internationally recognised firms such as Bjarke Ingels Group (BIG) in Copenhagen, Dosmasuno Arquitectos in Madrid, MRT Design in Shanghai and more recently at McBride Charles Ryan (MCR) Architects in Melbourne. At MCR Qianyi's focus was on the design and delivery of internationally acclaimed large scale educational projects.

Amelia Borg - Founding Director, Registered Architect

As a founding director of SIBLING Amelia has been the lead designer and project manager for a number of recent projects. She managed the award winning DUST project, which was an innovative project, challenging the traditional notions of bricks and mortar retail and providing a retail experience which incorporated both online and physical retail. Amelia has also led the design and delivery of the Thousands Store, the AIH store and the Vice Media head quarters.

Prior to SIBLING, Amelia obtained a broad range of professional experience both locally and internationally. She registered as an Architect whilst working for McBride Charles Ryan (MCR), here she was an integral part of the design team, and later managed project delivery for both award winning PEGS educational facilities. Following this she worked in Amsterdam for several years, for Sophie Valla architects and later as a research editor for Volume Magazine. Upon returning to Melbourne, Amelia has additionally undertaken teaching at RMIT, and The University of Melbourne.

Jane Caught - Founding Director, Registered Architect

Jane has a diverse range of expertise which has seen her successfully manage a number of educational projects for Monash University. Her true specialty lies in her ability to analyse and distill the unique, needs of users each project and translate this into a physical manifestation within the spaces. Jane has been the lead designer and project manager for the Squint Opera HQ, the Monash University BDI project and the Federation Square playscape project.,

Jane has had over 10 years of professional experience since graduating in 2004, and has worked with a range of internationally recognised architectural firms. She has worked for Minifie Nixon Architects, SJB Architects and more recently at BKK Architects where she was project architect for 'Beached House', winner of the Victorian AIA Award for Best New Residential in 2011. In addition to her professional obligations, Jane has run design studios at the University of Melbourne, RMIT and Monash Universities.

Additional Selected SIBLING Staff

Timothy Moore - Concept Strategist/ Designer

Nick DuBern - Architectural Assistant

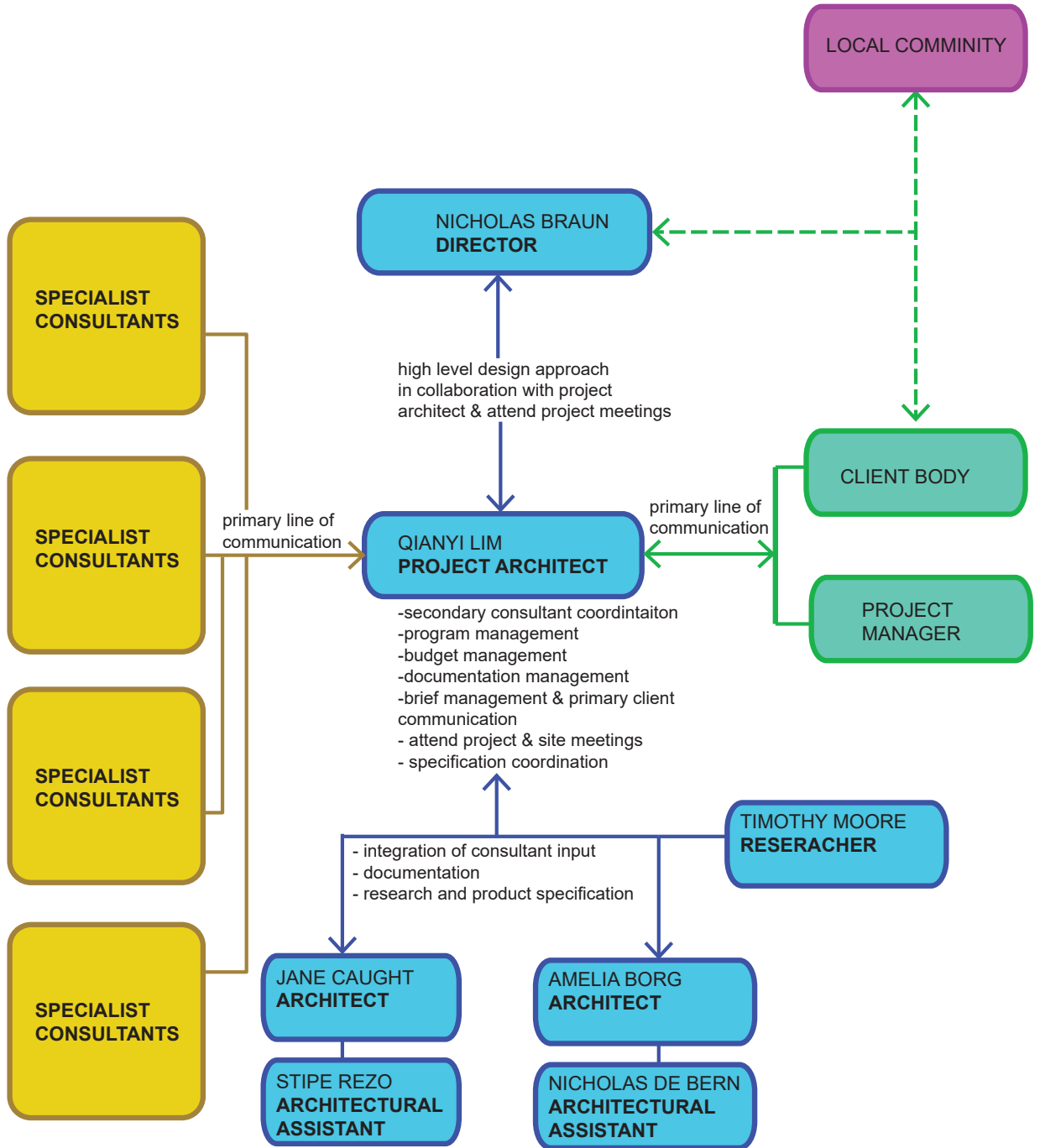
Stipe Rezo - Architectural Assistant

Brendan Ung - Interior Designer



Public Offer, RMIT Design Hub

5. PERSONNEL



6. COLLABORATION

SIBLING philosophy is that to produce results of the highest quality in terms of project conduct, design integrity and technology, collaborations occur by choice over necessity.

With SIBLING, collaboration is a cultivated, considered process, interwoven with our design methodology. It reflects our open-minded culture wherein new perspectives are embraced as valued opportunities and our overriding desire is simply to work with the best people in any given area.

Client Collaboration

On a client level, close collaboration is welcomed and is integral to all phases of the design and implementation process. This ensures that the final architecture embodies the client organisation's values, aspirations and personality and guarantees successful delivery of the project.

Driving the successful client-oriented results of this design process are two key practice characteristics; our adaptability, something that stems from the practice's size and flexible structure, but above all, this success arises from the culture of the practice itself.

Consultant Collaboration

Our aptitude for working efficiently with partners to extract value is further exploited on a technical level. Due to our size, culture and open design methodology, SIBLING offer a unique level of flexibility with respect to the scale of projects we undertake. As the need arises, SIBLING can import external expertise to plug into our design process, drawing on our large network of technical partners and assembling a project team tailored specifically to the requirements of the project at hand. This technical collaboration allows our clients the flexibility to benefit from the practice's design capabilities across a variety of scales, from small interior design projects to institutional master-plans.



Wood Street Development

7. OH&S

OH&S Procedures and Processes

The management of SIBLING is committed to providing and maintaining a safe and healthy work environment for its employees and anyone upon its premises. In this regard, a 'duty of care' is placed on all employers, all employees and any others who have an influence on the hazards in the workplace. We have provided more detailed information in the OH&S questionnaire in relation to our policy, management systems and safety practices.

SIBLING has procedures and processes for dealing with OHS issues. These include:

- The establishment of Designated Work Groups
- The appointment of a Health and Safety Representative from each group
- The conduct of an OH&S committee (if requested by the Health & Safety Representatives);
- Procedures for training new employees in OH&S requirements;
- Procedures for reporting injuries, hazards and incidents within SIBLING;
- Procedures for reporting building maintenance issues to the building supervisor; and
- the undertaking of an annual OHS self-assessment across the organization.

SIBLING also carries insurance against employees being injured at work, known as WorkCover.

The duty of care of SIBLING is to ensure that the entire working environment is safe and without risks to health. SIBLING also has specific duties and obligations as follows, in:

- Providing a safe working environment;
- The provision and maintenance of safe plant and systems of work, and arranging safe systems of work in connection with plant and substances;
- The implementation of arrangements for the safe use, handling, storage and transport of substances such as dangerous goods and harmful chemicals or materials;
- Maintaining the safe condition of the workplace;
- Providing workers and contractors with adequate facilities;
- Making sure workers have adequate information, instruction, training and support to work in a safe and healthy manner;
- Providing information and instruction on workplace hazards and supervision of employees in safe work;
- Monitoring conditions at any workplace under their control and management;
- Adequately monitoring employee's health when applicable;
- Keeping information and records relevant to its workers' health and safety;
- employing or engaging people with the necessary qualifications or expertise to advise on health and safety issues affecting workers;
- nomination of a senior employer representative;
- generally monitoring conditions at the workplace;
- providing workers with information about health and safety arrangements, including the names of those to whom the worker should refer with an inquiry or complaint; and
- ensuring that other people are not endangered by the conduct of our business.

SIBLING is happy to provide a complete copy of its Occupational Health and Safety Manual and procedures upon request.

8 . BREIF

The brief for this projects calls for ideas surrounding the adaptive re-use of the Old Bega Hospital. Using the mission statement for the centre as a departure point

'To develop a centre for our region's identity. A place where we celebrate our past, nurture our community and dream about our future.'

Every project presents a range of specific design challenges and opportunities. The successful design will not only make an impactful contribution to the local community and community groups who will use the facility but will create a structure that will engage both the broader community and visitors alike.

Community & Social Significance

We understand the importance of these projects to the community as a rich social asset. Being of such significance, we understand the importance of putting the community and their needs at the center of the project. We want to update the facilities such that they continue to serve the community- reflecting and respecting their aspirations.

We have had a range of experiences working on significant community projects which address a diverse range of user groups within the community. In particular last year we were commissioned to design an activation playscape for Federation Square which had to engage children, workers, city dwellers as well as tourists.

Similarly we worked with a wide range of client groups whilst completing the Getrude Glasshouse Gallery project. Here we worked with the owners of the space, as well as a government funded not for profit gallery as well as the artists who were going to use the space.



Federation Square Playscape

9. RELEVANT PROJECT EXPERIENCE



GERTRUDE ST CONTEMPORARY GALLERY

Date: 2015

Location: Collingwood , Victoria

Program: Art Gallery

Status: Built Budget: \$250K

Contact: Michael Schwarz

0418 548 619

This project is a small Art Gallery in Collingwood and will act as the project space for the established Gertrude St Contemporary.

The threshold between the street and the gallery interior creates a portal into the art world via the display of work through an overblown lattice frame. Stepping into this zone, the mirror-clad ceiling and wall reflects the gallery visitors so that they are also put on show. The ceiling frame continues into the gallery interior. Below, the space is left neutral for artists to inhabit.

LATROBE CITY COUNCIL SPORTS CLUB

Date: 2017

Client: La Trobe City Council

Location: Melbourne

Program: Multi-Purpose Sports Club

Budget: \$800k

Status: In development

Contact: Glenn Wearne

Glenn.Wearne@latrobe.vic.gov.au

This Multi-purpose sports facility located in the Latrobe Valley aims to create a sense of inclusive sportsmanship. This is achieved via a curved external spectators area that allows opposing teams a friendly social space. The design also aims to encourage the growing participation of local female sporting teams.

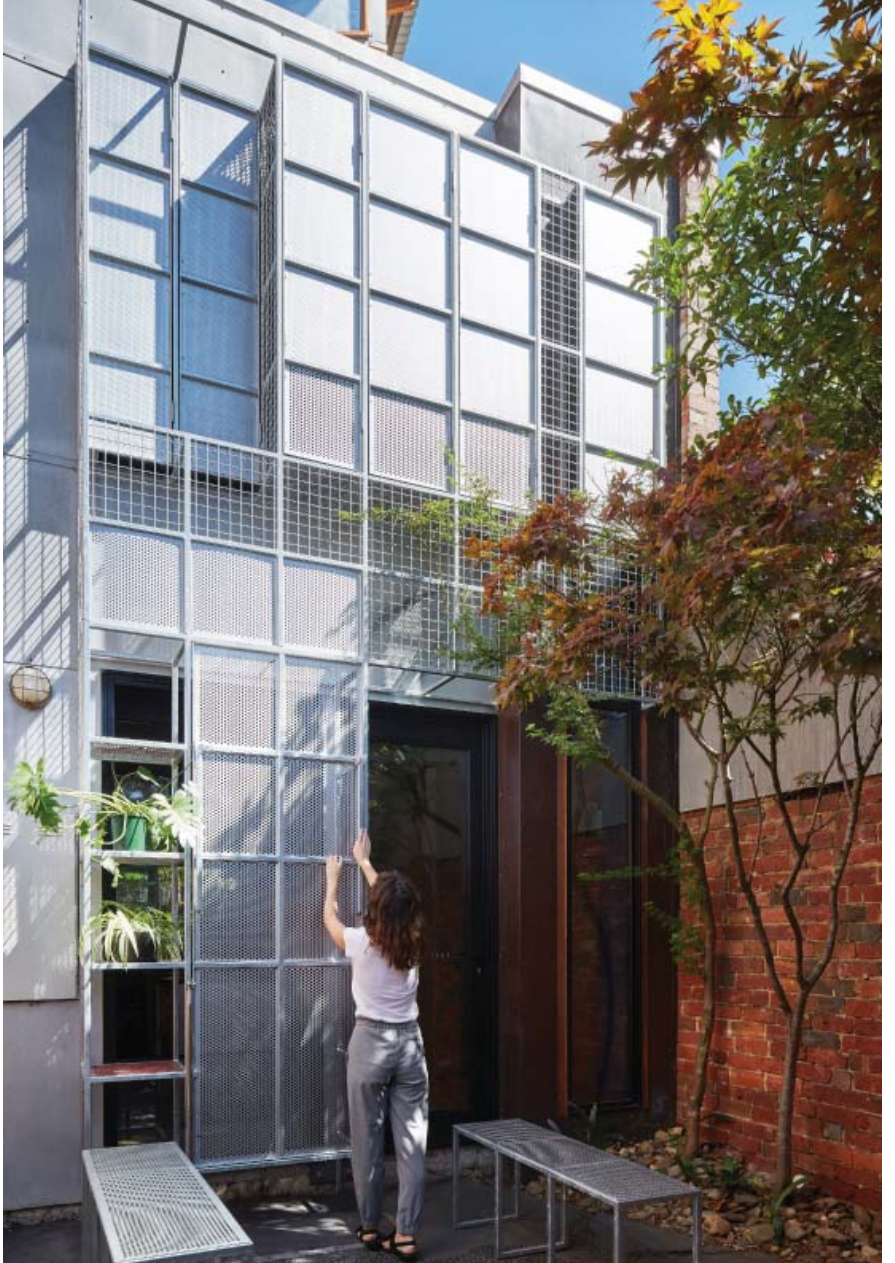


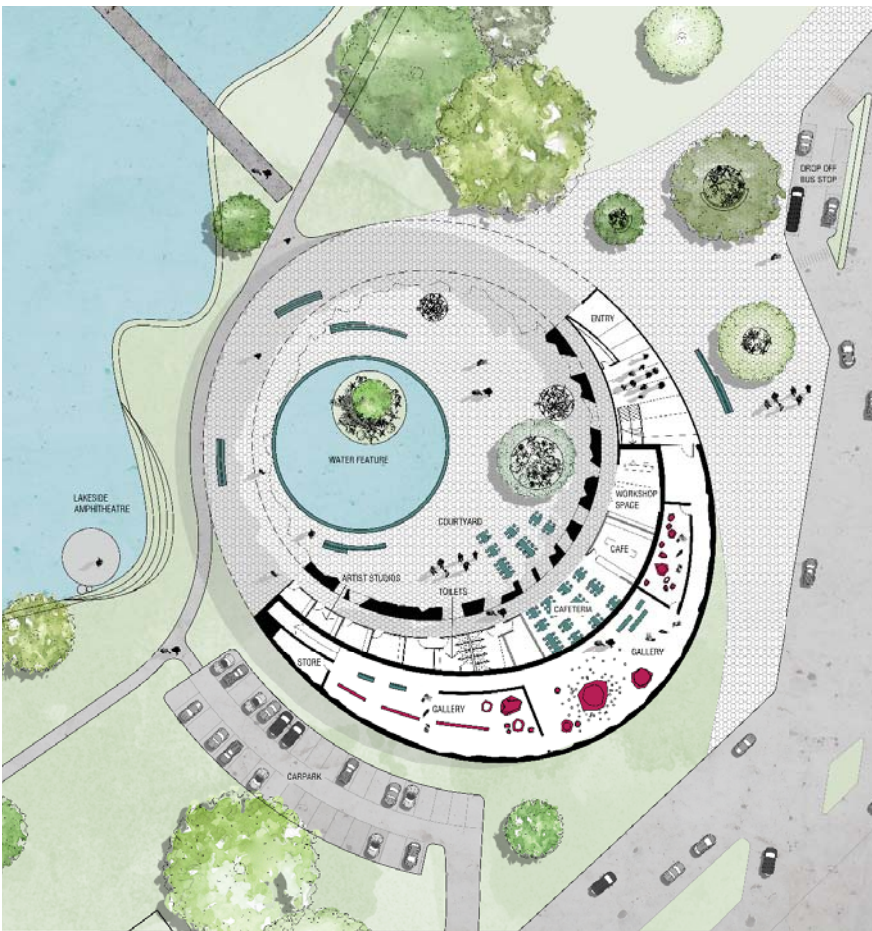


RAE STREET

Date: February 2016
Location: North Fitzroy
Program: Residential
Budget: \$600K
Status: Completed

The facade of this home becomes a three dimensional grid; acting as both an internal infrastructure and a shading device. Internally seating and shelving are created for extra amenity, whilst externally a planting matrix is created with outdoor furniture folding down for extra use of the courtyards.





SHEPPARTON ART MUSEUM

Date: 2014

Client: Private

Location: Shepparton, Victoria

Program: Art Gallery

Status: Concept

Contact: Kirsten Paisley

(03) 5832 9517

The new landmark museum is instantaneously iconic and recognisable - a treasured curio, precious bracelet or delicate band - which reflects the ceramic collection within.

Bringing the collection into the twenty-first century, the recent phenomena of 3D-printing in ceramic production - of stoneware, earthenware and porcelain - is referenced in the perforated ceramic façade. The circular form and circulation imbues a delight and logic to moving in the round.



MONASH UNI STUDENT HUB

Date: 2016

Client: Monash University

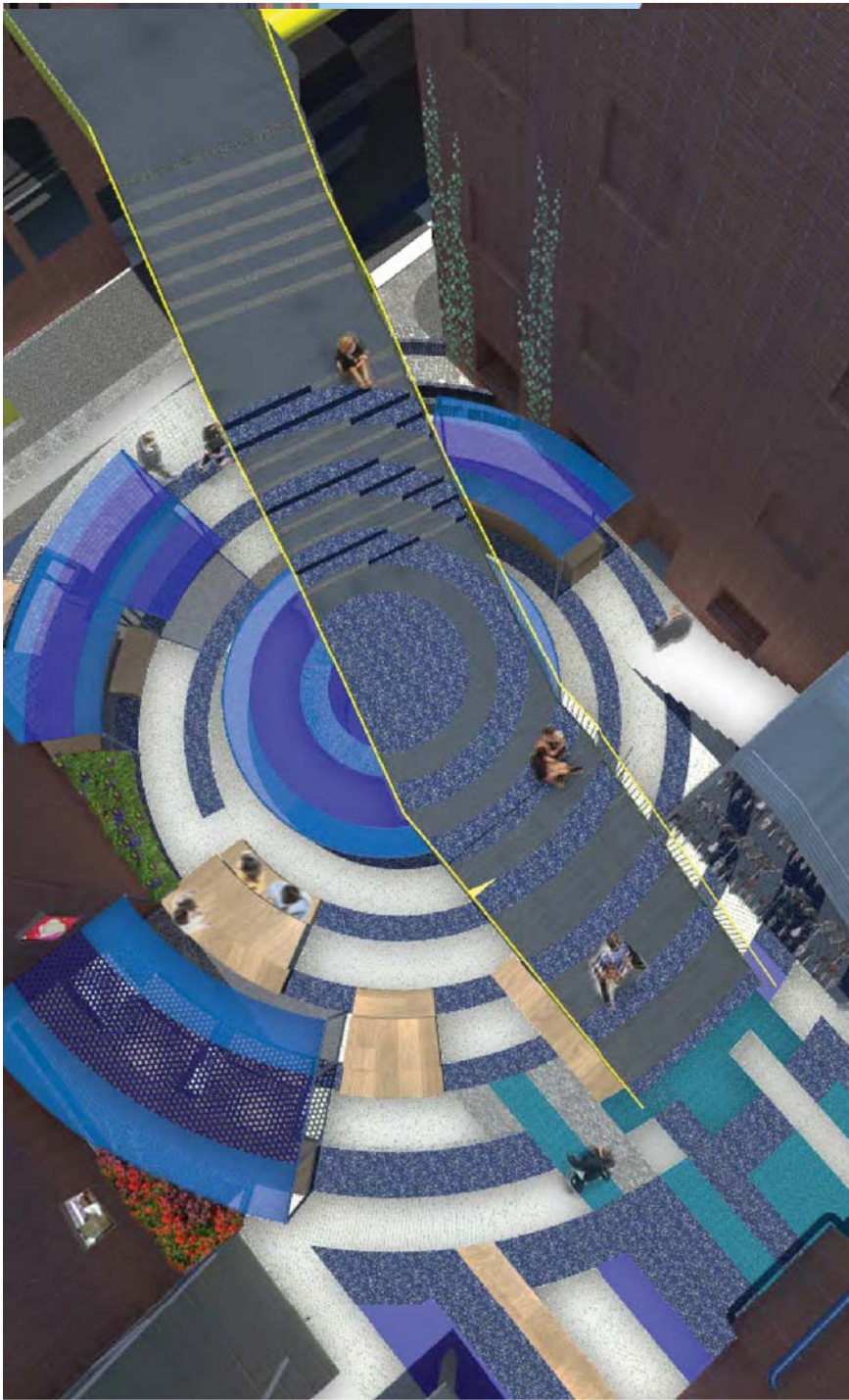
Location: Frankston, Australia

Programme: Educational

Budget: \$300k

Contact: Meaghan McDonnell
+61 3 9905 4046

The Peninsula Campus student hub is a facility purpose built to encourage a space for students staff and visitors to interact. As the main social space within the campus the hub aims to allow a range of activities such as, studying, socialising, meetings and events. Through the design social hot spots allow this range of activities to occur.



RMIT UNIVERSITY PUBLIC REALM

Date: 2017
Client: RMIT University Location:
Melbourne Australia
Program: Public Realm &
Landscaping
Budget: \$1.5M
Status: In development

This project sees the majority of public realm spaces within the RMIT city campus redeveloped. In between and left over spaces are rejuvenated to provide areas for gathering, colour and planting is used to tie these spaces together and give them some prominence across the campus.



HILLS ACADEMY ELC

Date: 2017
Client: Hills Academy Early Learning Center
Location: Sydney, Australia
Program: Landscaping
Budget: \$1M
Status: In development

This play-space design for a childcare centre in western Sydney takes the principles of a hilltop village and scales it down to the size appropriate for small children. Focusing on play and sensorial experiences the design allows for open space running, hiding, jumping, splashing and overall fun to allow for an enriched pedagogical

YOUNG STREET

Date: 2012
Client: Private
Location: Fitzroy, Australia
Program: Residential
Budget: \$3.6M
Status: Complete

This converted warehouse consisting of four dwellings, draws on both a past and recent cultural heritage; with planning requirements ensuring the protection of the original brick facade (a cordial factory constructed around the turn of the twentieth century); as well as an acknowledgment of the building's most recent manifestation as both Y3K artist-run gallery & studios, and as a transient home of SIBLING NATION. A recurring theme is the filtering of light and views.



MONASH UNIVERSITY SCHOOL OF NURSING & MIDWIFERY

Date: 2016

Client: Monash University

Location: Mornington Peninsula
Campus

Program: Educational

Budget: \$250k

Status: Built

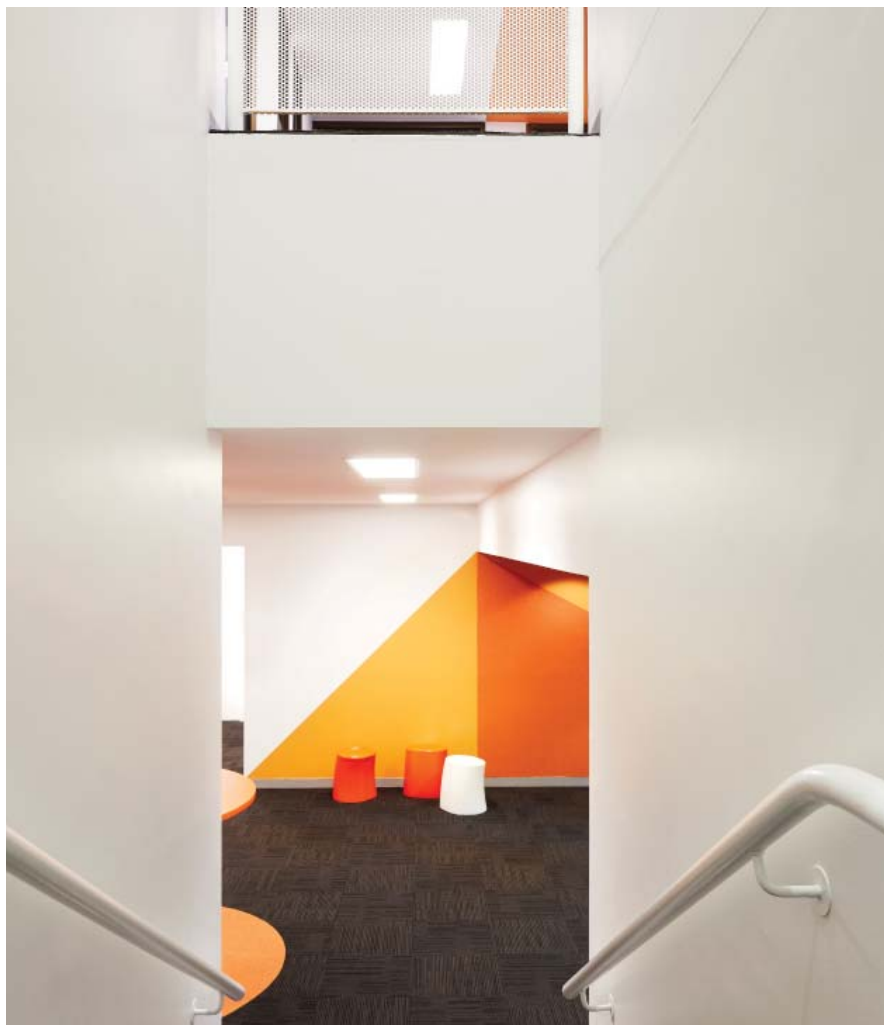
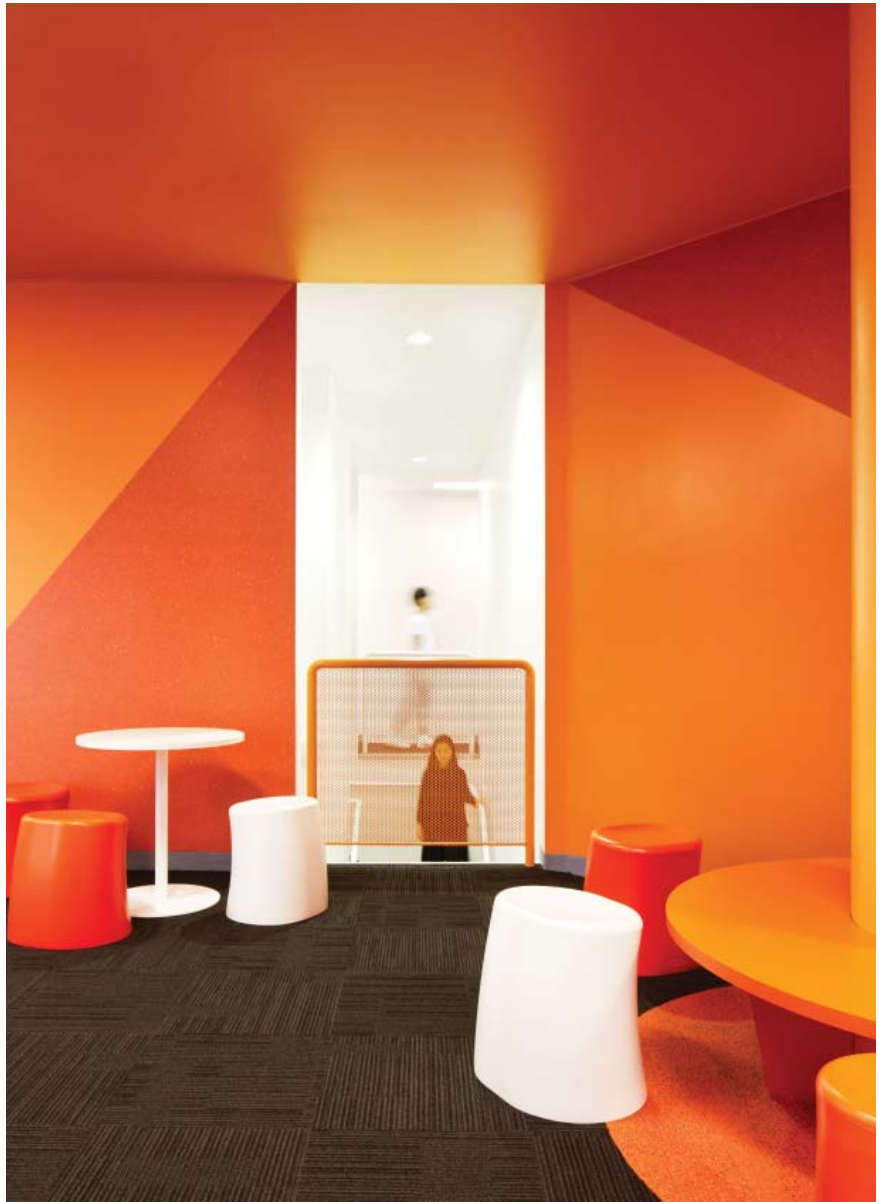
Contact: David Chuahan

+61 3 9902 0331

This project consisted of Interior Design services throughout the existing Monash University School of Nursing & Midwifery.

Spaces throughout the building were reconfigured, and new spaces added including new a reception, public spaces student lounges and break out zones.

Colour was utilised as a key tool to enliven the spaces, activate areas as well as signal different uses through the building.



WHITEOUT



Date: December 2014
Client: Federation Square
Location: Melbourne, Australia
Program: Temporary Landscape



Whiteout consists of an array of white, circular ground-based elements that attract people from across Melbourne's largest public square. They form a landscape with a range of different functions – seating options that allow for flexible social situations; such as people alone, perhaps connecting with loved ones across the city or the globe on their smart phone; people talking or eating in groups; couples sharing a moment; a gaggle of exploring children. The overall expanse of the Whiteout landscape inherently unites those within it, encouraging and provoking new meetings amongst strangers.



CHILDREN & PARENT WORKSHOPS



Date: November 2013
Clients: Gyeonggi MoMA
Location: Seoul, South Korea
Programme: workshop

SIBLING was invited for a residency at the Gyeonggi Creation Center in South Korea to explore the impact of contemporary technology on the urban environment. While in Korea, SIBLING held three workshops at the nearby Museum of Modern Art for fathers and their children.

Parent and child were involved in creating architecture through collaboration with other families with repetitive geometries to form one structure.





MPAVILION: BODY MEETS

Date: November 2014
Clients: Office for Good Design/
MPavilion
Location: Melbourne, Australia
Programme: workshop

MMEETS Movement for Future Architects' was a series of workshops for children, teaching them about architectural landmarks around Melbourne's CBD by recreating them through body formation and movements.

The event was part of the MMEETS program as curated by The Office for Good Design, as part of the MPavilion, a City of Melbourne and Naomi Milgrom Foundation initiative.

10 . SITE , PROCESS & METHODOLOGY

The Old Bega Hospital stands off the Princes Highway neither as ruin or icon, but in an interim state. An adaptive and incremental approach to design will ensure The Old Bega Hospital will care for the community once again.

Concept: Community cares

People come together at community and cultural centres for a shared purpose. The Old Bega Hospital is a place for people to come and express themselves through arts, craft, performance, and meeting like-minded people in the community groups that uses its many rooms, or by just having a cup of tea. Beyond social and geographical connections that users have by living in the region, what makes this place unique and with purpose?

The Old Bega Hospital has the potential to become a new model for a type of twenty-first century civic space in both its architectural design, and the community within it.

This will be achieved with adding to the strategic vision the notion of: Welcome Here All Ages: “WHAA!”

Every activity or purpose at Old Bega Hospital will address WHAA!, that is, how to create a space that is welcoming for all types of community members in order to create intergenerational exchange.

We understand that projects which have an impact on the community or the facilities available to them requires clear communication to all stakeholders. Due to the nature of these projects we understand and would welcome input from representatives of the Bega Valley Shire, users of local facilities, business owners and community groups. We strongly believe in the importance of allowing all groups to be able to express their ideas and have input into the decision making process, as this will always lead to stronger outcomes.

We have had experience working with complex client groups and have held community consultation sessions in a variety of contexts. SIBLING was recently invited to participate and assist in a community workshop regarding the future development of the Queen Victoria Market. Here we worked with the council, the community and other stake holders working up different approaches and discussing various approaches to the redevelopment. We have also held many workshops including MMeets at Melbournes M Pavilion and Childrens Architecture



QVM Workshop

Incremental approach to design

It's hard enough to plan for the next five years, let alone the next twenty years. Sibling Architecture proposes an incremental approach to the architectural design of the Old Bega Hospital site.

An incremental approach to design, or undertaking the works in stages, can avoid the slowness of large projects and engage immediately with the site and potential users by getting people onsite as soon as possible. This engages a wider group of people in the process by seeing the centre take shape.



QVM Workshop

There are three strategies that will be undertaken: repair (make good), upgrade (improve and replace) and intervention (adapt building to new uses). The following 5 stages demonstrate our approach

Stage 0 - Starting over

Complete roof structure and internal floor

There is an urgency to complete the roof and floor structure before other works commence.

(We recommend to leave one room left in ruined state, ie, original dining room, to keep memory of the fire, which is the memory of many younger Began's who only have this memory of the building. Views in can be made within the existing structure)

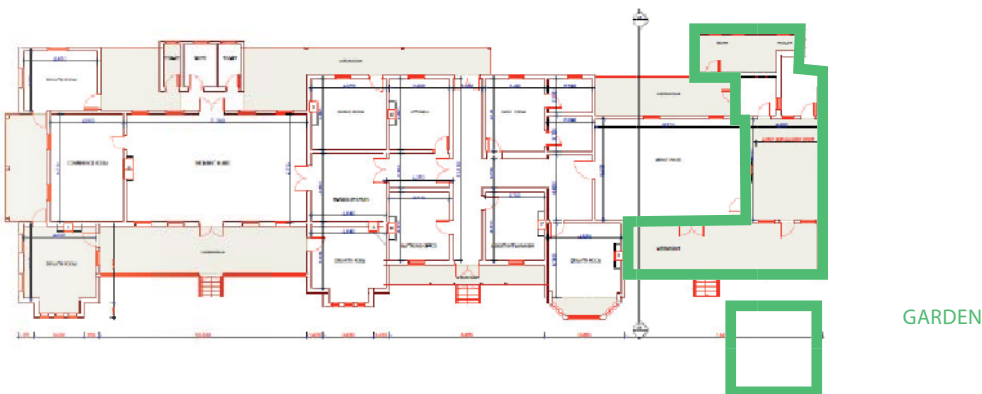
The following pages visually represent the following proposed stages.

STAGE 01 WELCOME KITCHEN

Create temporary cafe and kitchen garden with sitting on verandah. Men' in Conference room adjacent to Men's Ward

The easiest way to get people together is over food. Works should commence immediately on creating a social space for the community centre in order to have a visible and public meeting space. This is extended into the landscape with a temporary kitchen garden of native edible plants.

At this point a temporary one-day festival will be held where all future users are invited to participate and welcome the return of users to the old hospital. (This temporary one-day festival can be repeated annually



Bega Valley Amateur Bee Keepers
Bega Garden Club
G. Farram's Book Exchange
Artisan Garden Café



LOCAL CAFE GARDEN



COMMUNITY GARDEN

STAGE 02 PERFORMING THE COMMUNITY

Men's Ward wing and playground: Men's ward becomes hall for temporary meetings, events, art and local produce display

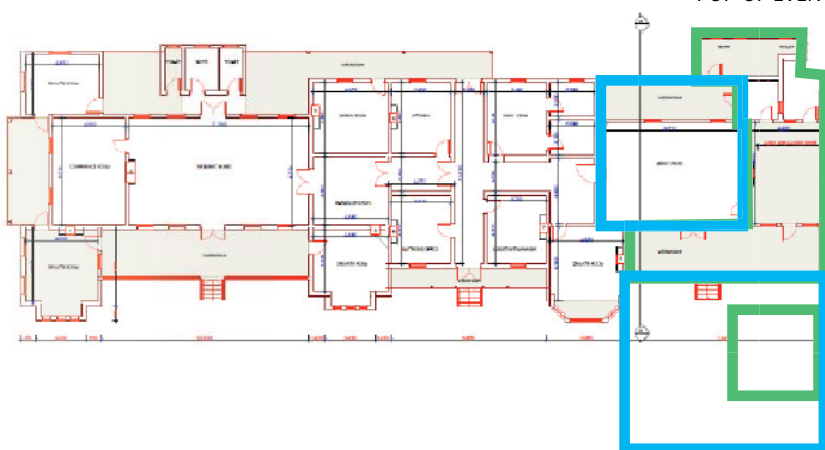
It is hard to predict every group of activity that will happen in the space. The Men's Ward Wing becomes a flexible event space to support all types of activity: meetings, performances and workshops. (Some of the infrastructure is temporary in order it can be moved later.)



SCHOOL ACTIVITIES



POP-UP EVENTS



CAFE
ARTS, CRAFT AND
LOCAL PRODUCE

Valley Originals Art and Craft Co-operative
Bega Quilters
Bega Valley Art & Craft Society
Bega Weavers
Bega Woodcrafters
Bega Valley Potters
Sunday Printers (print making group)
Australian Sewing Guild
Regional Gallery Print Making Workshops
Life Drawing Classes

Bega Valley Amateur Bee Keepers
Bega Garden Club
G. Farram's Book Exchange
Artisan Garden Café



COMMUNITY ART ORGANISATIONS



POP-UP EVENTS

STAGE 03 SCALING UP

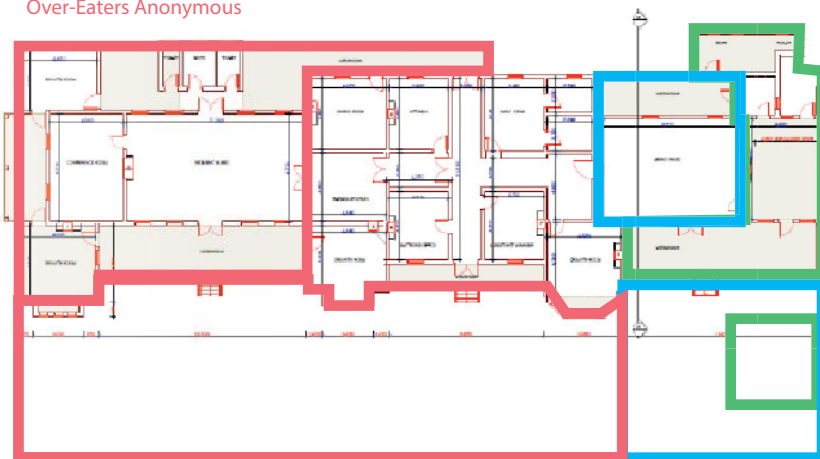
Women's Ward with connecting corridor and further landscaping

Events shifts to Women's Ward. Men's Ward becomes extended place of cafe, including arts and crafts display.

Work is undertaken on the Women's Wing to make it into a permanent flexible event space: for weddings, conferences, theatre and other community group events. The Men's Ward space becomes a larger cafe space, which includes craft workshop and selling spaces.

As funds become available landscaping is undertaken across the site. The temporary garden is placed in its permanent place.

Bega Valley P.A.N.T.S. (Theatre)
Over-Eaters Anonymous



CAFE
ARTS, CRAFT AND
LOCAL PRODUCE
EXHIBITION, EVENTS
AND PERFORMANCE

GARDEN
PLAYGROUND
LANDSCAPE

Valley Originals Art and Craft Co-operative
Bega Quilters
Bega Valley Art & Craft Society
Bega Weavers
Bega Woodcrafters
Bega Valley Potters
Sunday Printers (print making group)
Australian Sewing Guild
Regional Gallery Print Making Workshops
Life Drawing Classes

Bega Valley Amateur Bee Keepers
Bega Garden Club
G. Farram's Book Exchange
Artisan Garden Café



FLEXIBLE COMMUNITY SPACES



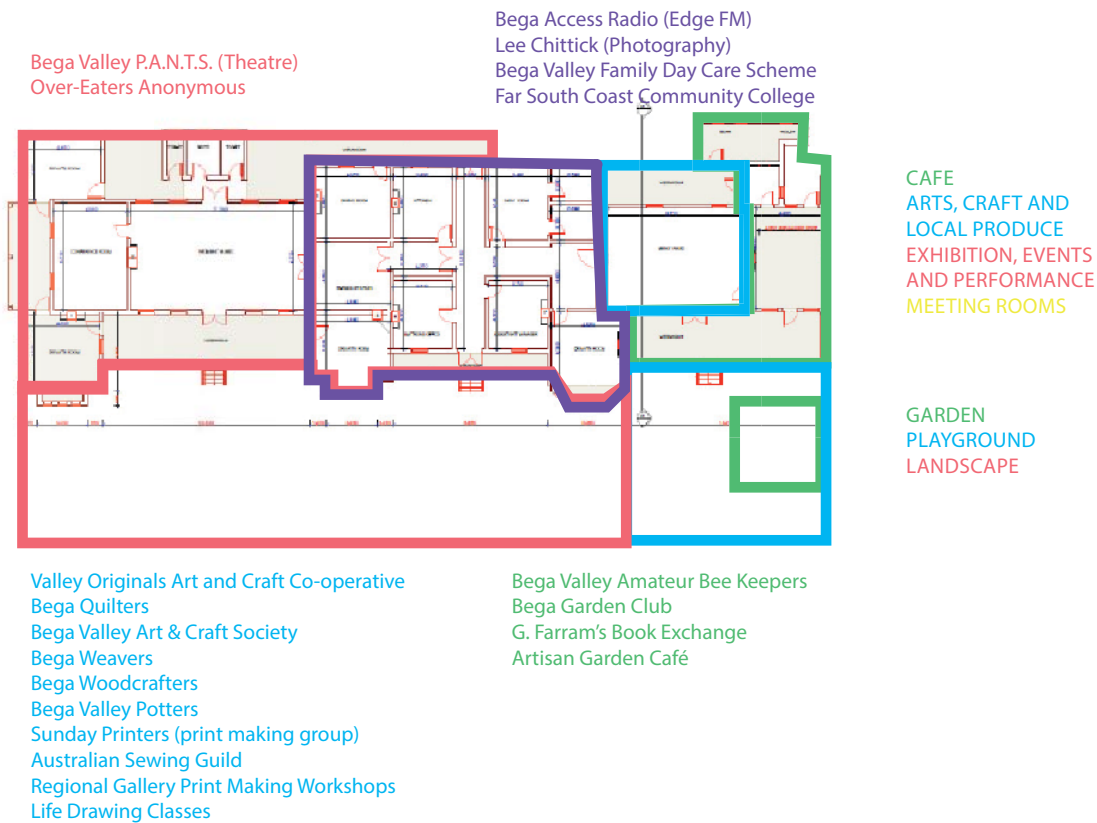
EVENT SPACES

STAGE 04 COMPLETION

Office section

Individual rooms are complete

The middle wing is complete with short- and long-term accommodation for different community groups and individuals. Design of these spaces are informed by the various community events and demands exposed in the interim period.



COMMUNITY MARKETS



OUTDOOR CINEMAS

11. PRICING PROPOSAL

Project Pricing Summary

The below schedule outlines our fees based on your information from the Friends of Old Bega Hospital website. Accurate specialist consultant fee proposals will be obtained as the brief develops.

The fee below is calculated based on our understanding of the brief, constraints and timeframes.

This a fee for Full Architectural services however we are happy to negotiate on levels of engagement as required by the project.

If the scope, budget or timelines vary considerably we reserve the right to negotiate our fees accordingly. This will be done in close collaboration with the project manager.

NSW Govt Grant for Replacing Roof	\$500,000
Estimated Restoration Value	\$2,240,000

ARCHITECTURAL FEE (Exclusive of GST)

Concept Design	\$19,384
Design Development	\$19,384
DA Application and Approval	\$9,692
Construction Documentation	\$29,076
Contract Administration	\$19,384

Total Arch Fee **\$96,920**

CONSULTANTS

Throughout the project there will be a need to engage with various specialist consultants, which may include but not be limited to the consultants listed below:

Structural Engineer
Private Certifying Authority
Lighting Design
Quantity surveyor
Town Planner
Heritage Architect
Landscape Architect
DDA Consultant
Traffic Engineer
Energy Consultant

12. AWARDS & PRIZES

Awards and Press

SIBLING has been recognised both locally and internationally for its progressive and innovative design practice. We have been featured regularly in the media including but not limited to The Age, Guardian Australia, Artichoke and Dezeen.

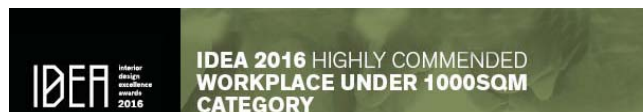
Sibling was recently nominated as one of 7 Innovative Design Studios to watch by Metropolis Magazine, a New York based international design publication.

2016



Gertrude Glasshouse

Commendation for Small Project Architecture, Victorian Institute of Architect's Awards



Squint Opera

Commendation for Workplace Design
Design Institute of Australia Interior Design Awards



Work With Me Here - Award for Exhibition Design, Interior Design Excellence Awards

2015



Dust Concept Store

Award for Commercial Space
Modern Decoration International Media Awards, Shenzhen CN



Sibling Architecture

Emerging Designer Award,
Design Institute of Australia Interior Design Awards



Dust Concept Store

Award for Commercial Interior,
Design Institute of Australia Interior Design Awards



Dust Concept Store

Premier Award for Interior Design,
Design Institute of Australia Interior Design Awards

13. CONCLUSION

Sibling Architecture would be thrilled to be considered to be the lead designer for the Old Bega Hospital. Our experience in working with local communities and bringing out the best solutions for the users puts us in great position to work effectively within the Bega community.

Having worked with many Heritage buildings in both Melbourne and Sydney we understand the delicate balance that is required in making these buildings usable in todays cultural climate, whilst maintaining their value as important historical community assets.

Please do not hesitate to contact me should you have any questions relating to the above document.

We look forward to getting on with the good business of making this project a key destination within the local community.

Kind Regards,

A handwritten signature in black ink, appearing to read 'Nicholas Braun', with a stylized, flowing script.

Nicholas Braun