

The background image shows a weathered brick building with a prominent arched window. The bricks are a mix of red and brown tones, with some mortar missing. A green tree is visible through the archway. The sky is a clear, bright blue. The text is overlaid on the right side of the image.

SIBLING  
ARCHITECTURE

OLD BEGA HOSPITAL  
ARTS & CULTURAL CENTRE

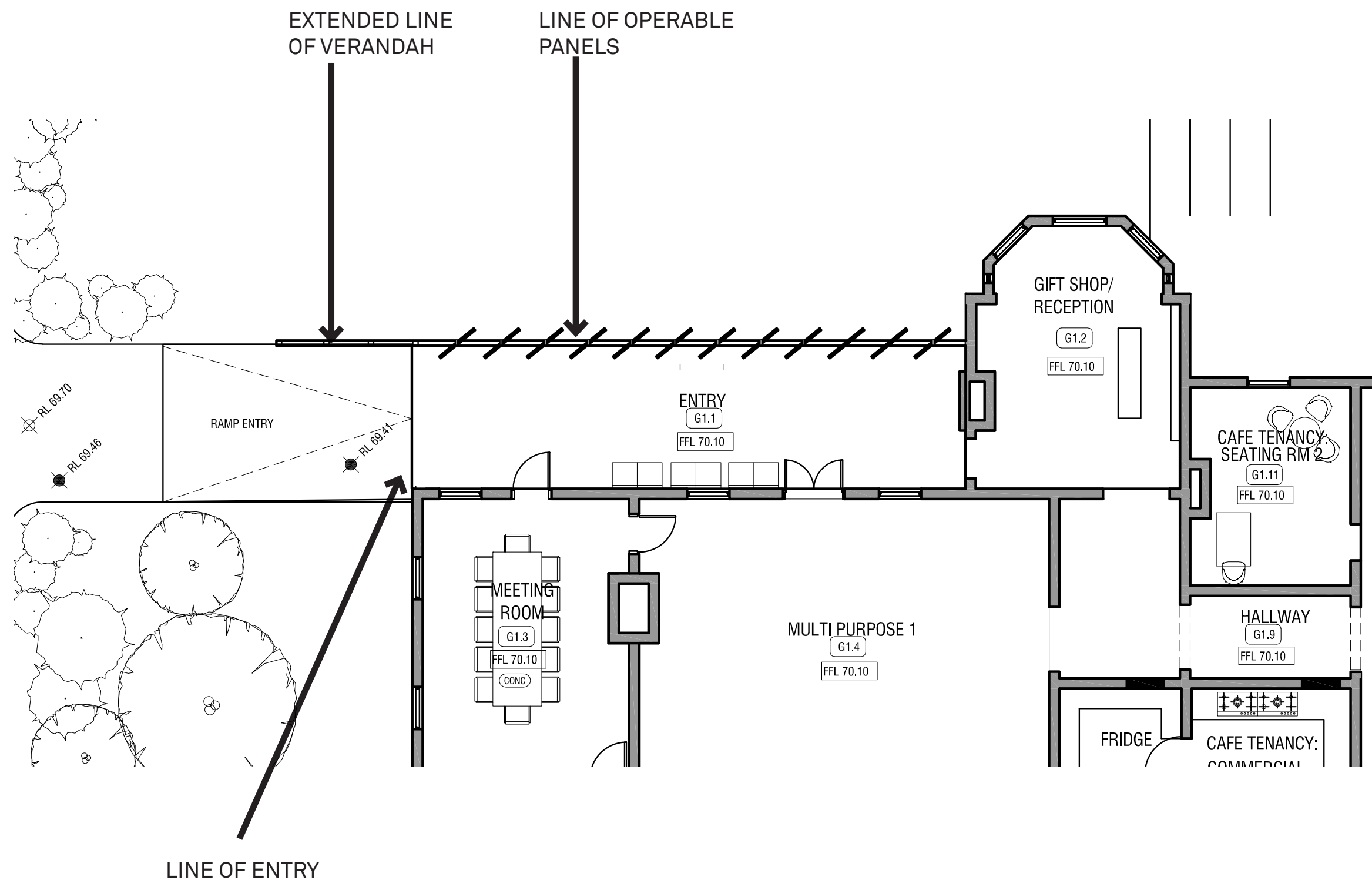
CONCEPT DESIGN REVIEW 06  
26.02.2018



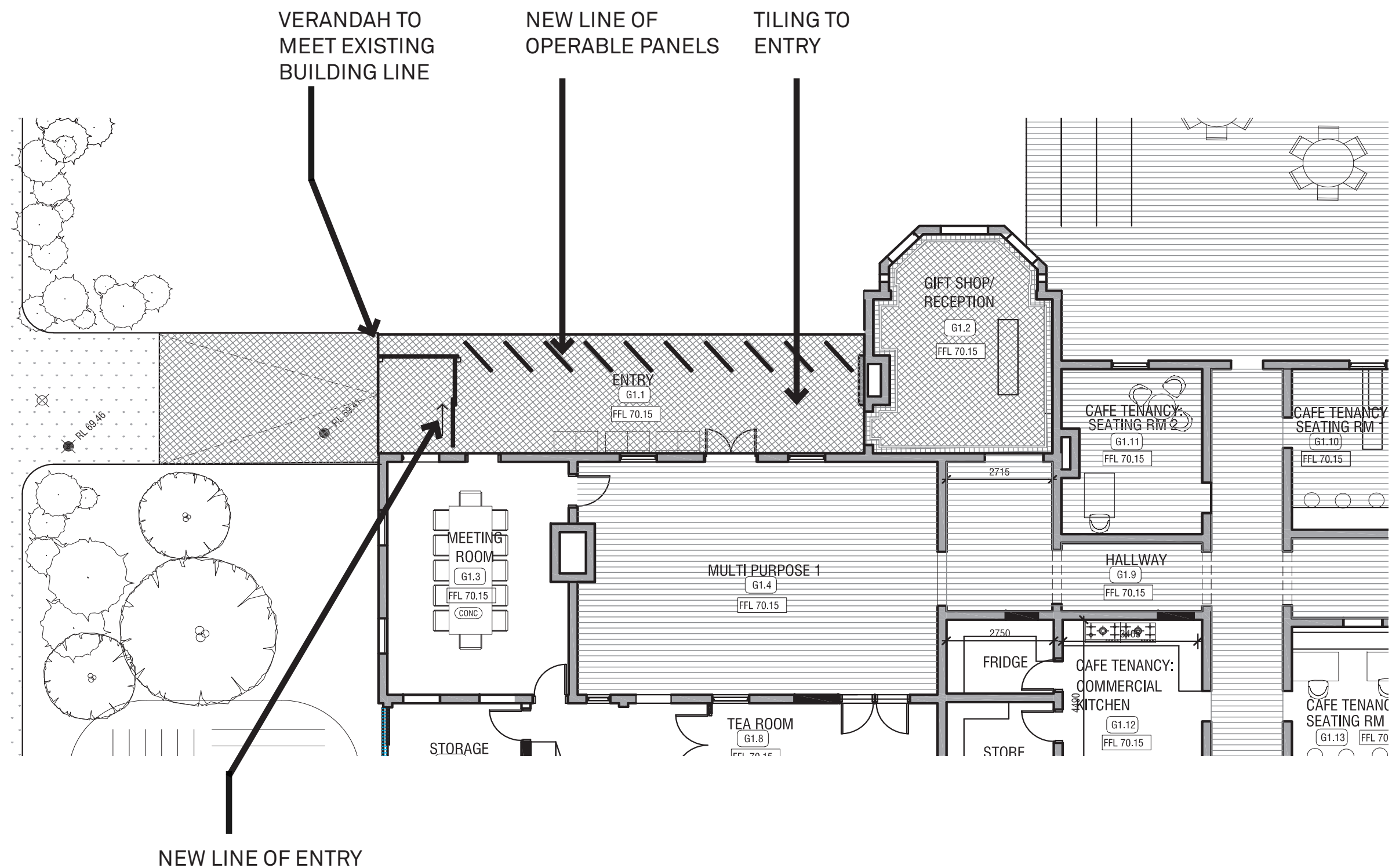
## NORTH WEST ENTRY

FEEDBACK WAS;

- 1) THE ENTRY TRANSITION SHOULD BE BROUGHT WITHIN THE EXISTING BUILDING LINE.
- 2) CONFIRMED THE USE OF GLAZING TO OPERABLE PANELS. THE LINE OF PANELS TO BE INSET FROM EAVE LINE.
- 3) ENTRY LINE TO BE BROUGHT WITHIN ROOF LINE TO ALLOW FOR PROTECTION FROM RAIN



PREVIOUS PLAN SHOWING NORTH WEST ENTRY



PLAN SHOWING CHANGES TO NORTH WEST ENTRY





## GRAPHIC FILM GLAZING PRECEDENCES



COLUMNS AND PATTERNS  
APPLIED TO GLAZING WITH FRITT



TILING TO ENTRY

UPDATED NORTH WEST ENTRY VERANDAH VIEW-CLOSED



COLUMNS AND PATTERNS  
APPLIED TO GLAZING WITH FRITT



TILING TO ENTRY

UPDATED NORTH WEST ENTRY VERANDAH VIEW-OPEN



COLUMNS AND PATTERNS  
APPLIED TO GLAZING WITH FRITT



UPDATED FRONT VIEW-CLOSED





**UPDATED FRONT VIEW-OPEN**

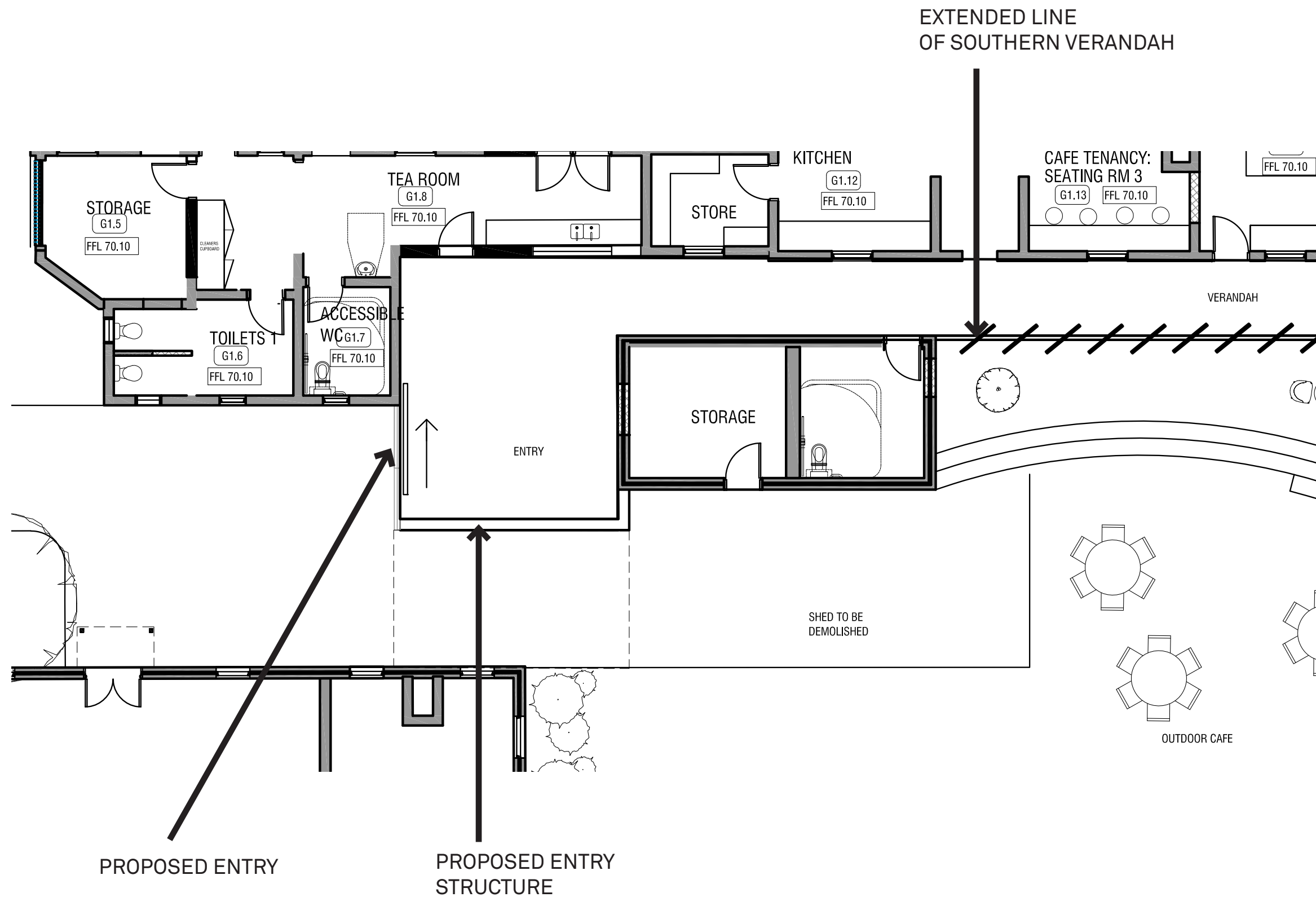


## SOUTHERN ENTRY

FEEDBACK WAS;

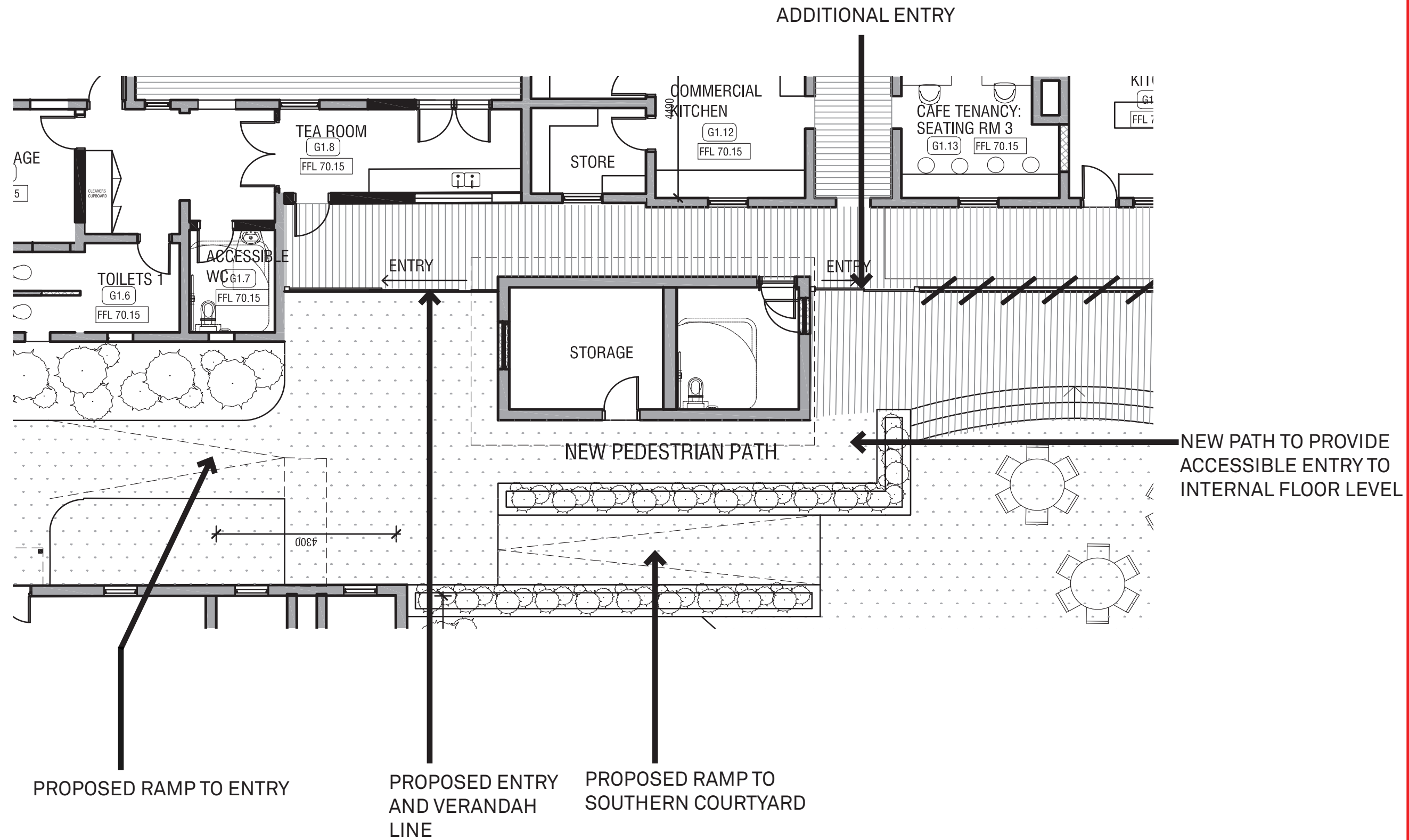
- 1) NO STRUCTURE TO SOUTHERN ENTRY AS SUCH
- 2) EXTENTION TO THE SOUTHERN VERANDAH AND NECESSARY MODIFICATIONS
- 3) RETAIN CONTINOUS ACCESS ALONG THE SOUTHERN SIDE AND TO INCLUDE ENTRIES TO EITHER SIDE OF THE MORGUE





**PREVIOUS PLAN SHOWING SOUTHERN ENTRY**





**PLAN SHOWING CHANGES TO SOUTHERN ENTRY**





UPDATED SOUTHERN ENTRY (WEST OF MORGUE)- OPEN





**UPDATED SOUTHERN ENTRY (WEST OF MORGUE)- CLOSED**





**UPDATED SOUTHERN ENTRY**





**UPDATED VIEW TO CAFE - CLOSED**





UPDATED VIEW TO CAFE - OPEN

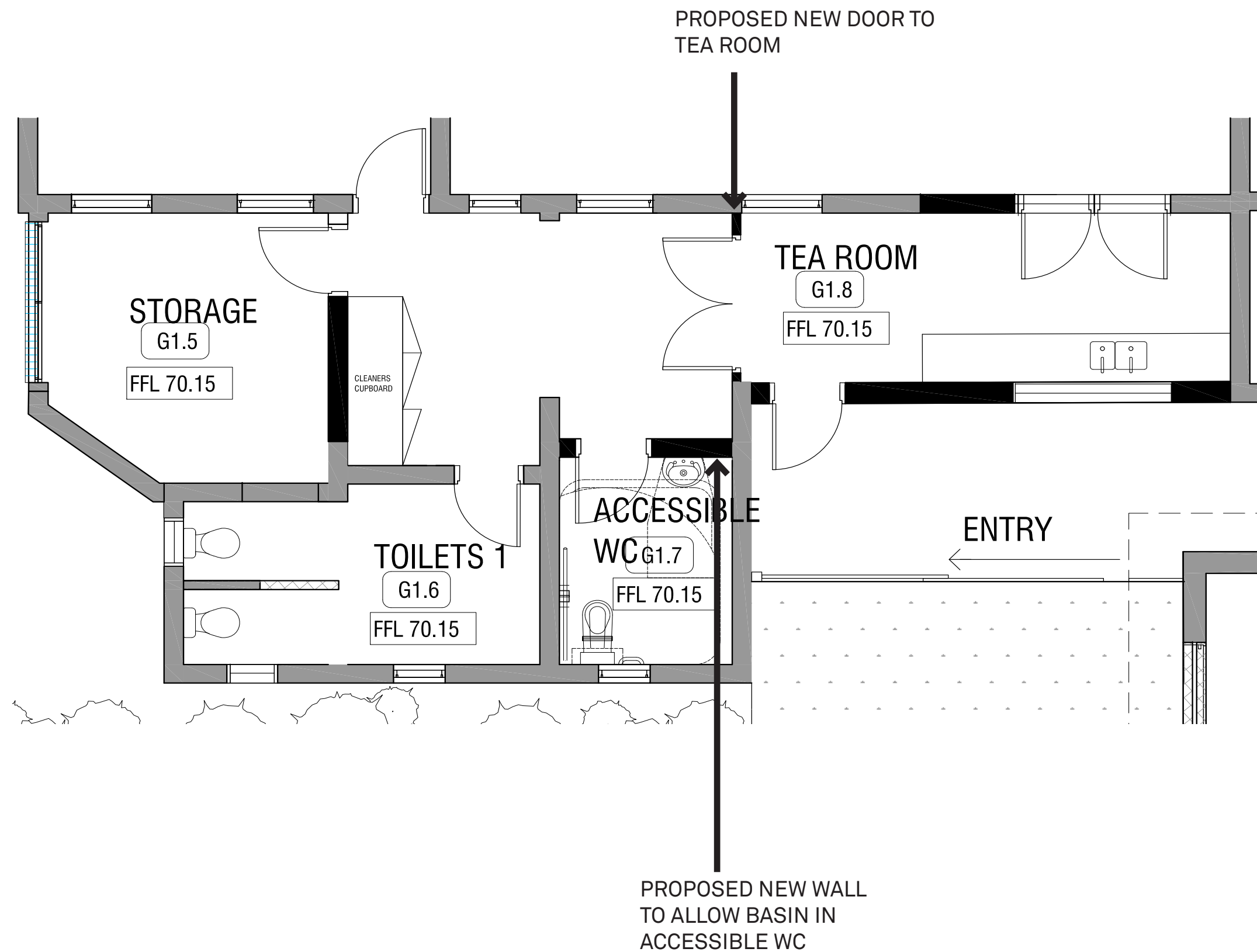


## TEAROOM ZONE

FEEDBACK WAS;

- 1) MOVE EXISTING DISABLED TOILET NORTH TO ALLOW BASIN INSIDE
- 2) SEPARATE ENTRY TO DISABLED TOILET FROM TEAROOM





**PLAN SHOWING CHANGES TEA ROOM**