

The background image shows a weathered brick building with a prominent arched window. A green tree is visible through the arch. The sky is clear and blue. The text is overlaid on the right side of the image.

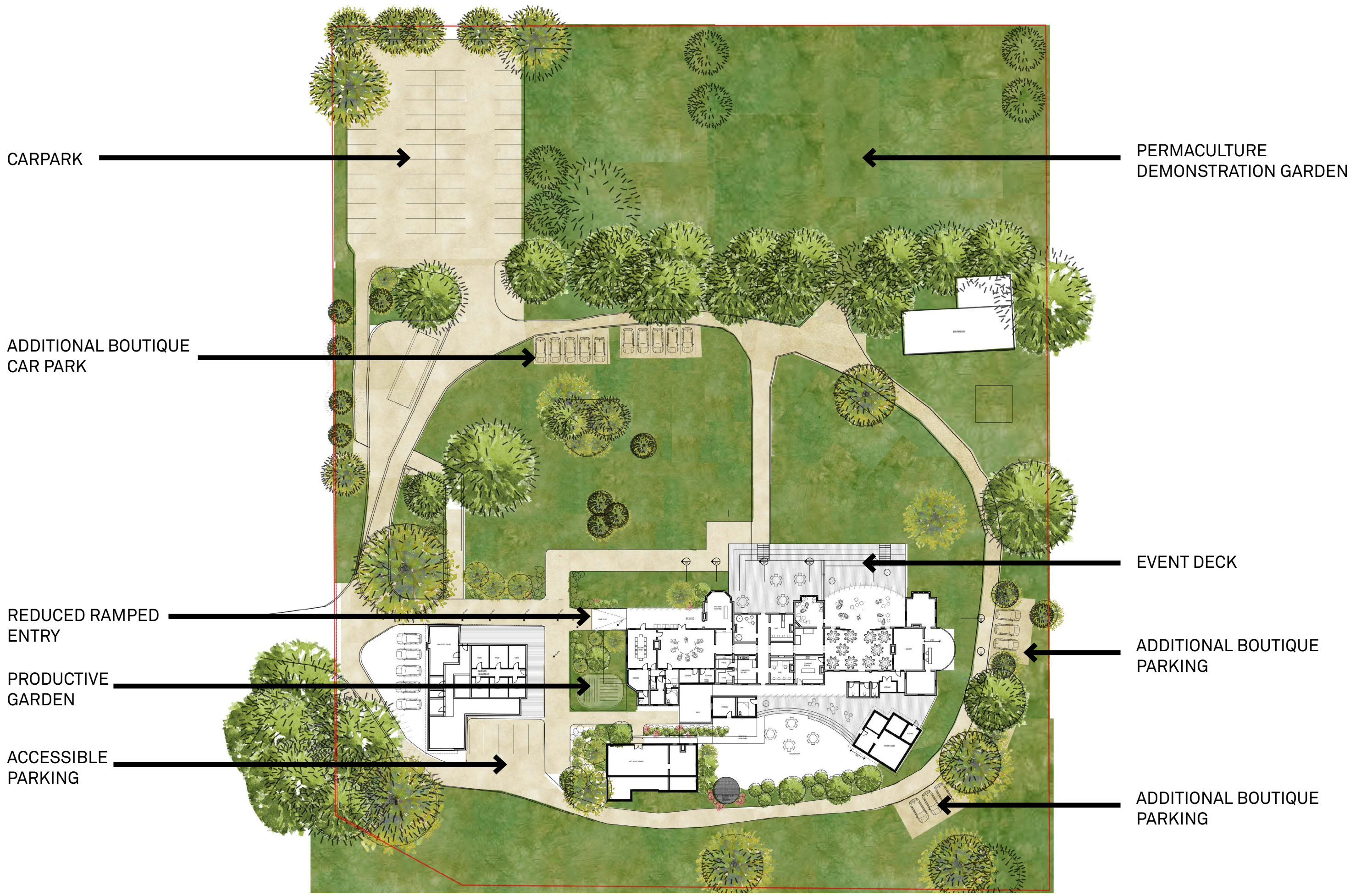
SIBLING
ARCHITECTURE

OLD BEGA HOSPITAL
ARTS & CULTURAL CENTRE

CONCEPT DESIGN REVIEW 05
DESIGN DEVELOPMENT 01

02.02.2018

MASTERPLAN



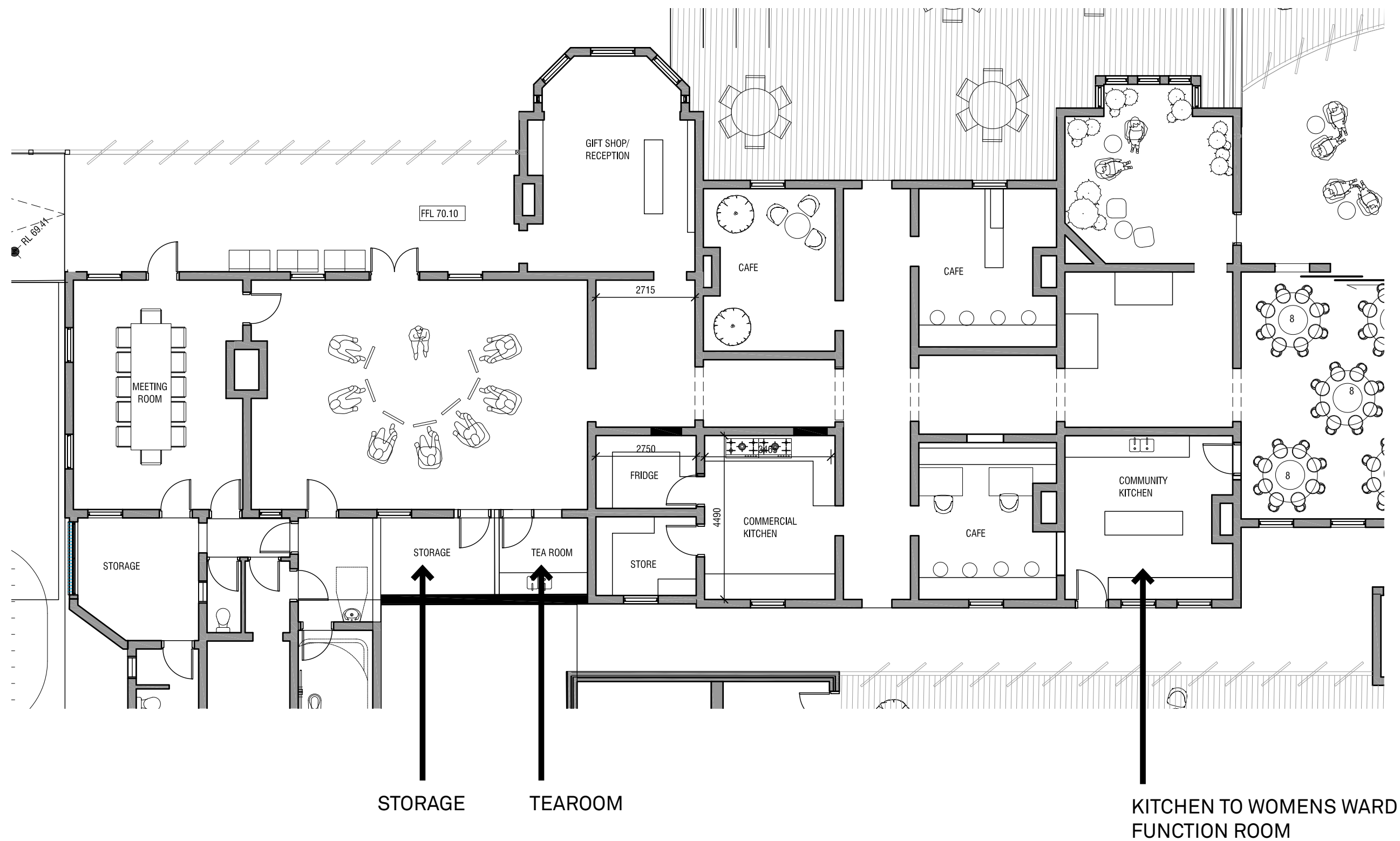
01 CONCEPT DESIGN REVIEW

02 DESIGN DEVELOPMENT 01:INTERIOR STRATEGY



01 CONCEPT DESIGN REVIEW

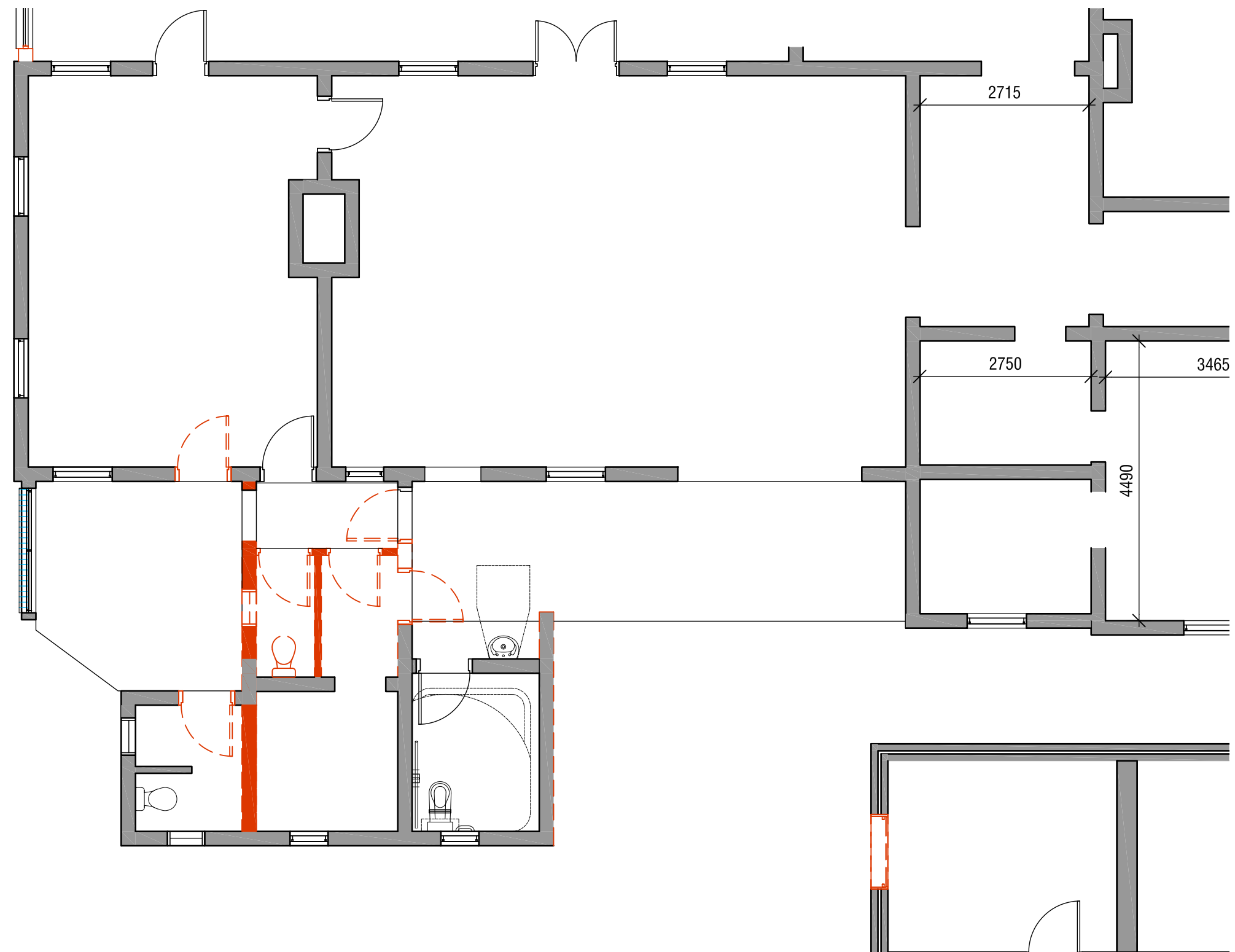
PLANNING UPDATES: KITCHEN UPDATES



PREVIOUS PLAN SHOWING KITCHEN CHANGES

FEEDBACK WAS;

- THE KITCHENETTE IS ONLY ACCESSIBLE DIRECTLY FROM THE MENS WARD - IS THERE A WAY TO MAKE THIS ALSO ACCESSIBLE FROM THE MEETING ROOM?
- IS THERE A WAY TO MAKE THE SOUTH-WEST TOILETS MORE ACCESSIBLE FROM BOTH THE MEETING ROOM, MENS WARD & EXTERNAL HALLWAY?



PROPOSED DEMOLITION TO SOUTH WEST CORNER



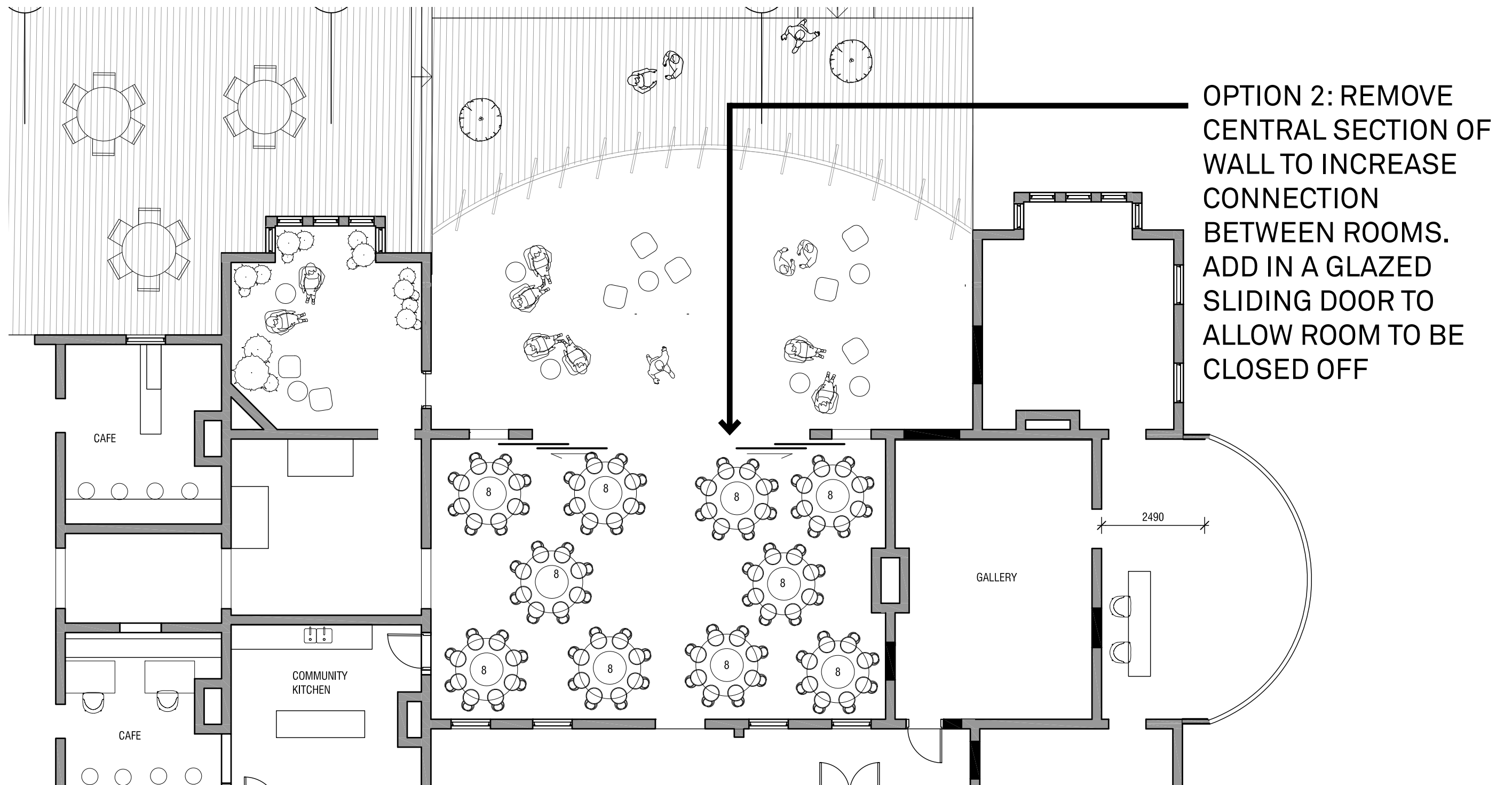
REVISED PLAN TO SOUTH WEST CORNER

WOMEN'S WARD

FEEDBACK WAS;

- 1) THE TRUST SAW MERITS IN BOTH APPROACHES, DECIDED ITS PREFERENCE WAS MARGINALLY FOR OPTION 2.
- 2) A THIRD OPTION THAT MIGHT BE CONSIDERED IS TO BRING THE WINDOWS DOWN TO GROUND LEVEL AND OPEN THEM AS DOORWAYS, SO THAT PEOPLE CAN MOVE THROUGH THEM. THAT WOULD INCREASE CONNECTION, WITH LESS DAMAGE TO HERITAGE FABRIC, THOUGH REPLACING WINDOWS WITH DOORS WOULD CHANGE THE HERITAGE LOOK AND FEEL.

OPTION 02



WOMEN'S WARD : PREVIOUS OPTION 2



OPTION 2: REMOVE
CENTRAL SECTION OF
WALL TO INCREASE
CONNECTION
BETWEEN ROOMS.
ADD IN A GLAZED
SLIDING DOOR TO
ALLOW ROOM TO BE
CLOSED OFF

WOMEN'S WARD : PREVIOUS OPTION 2



OPTION 2: REMOVE
CENTRAL SECTION OF
WALL TO INCREASE
CONNECTION
BETWEEN ROOMS.
ADD IN A GLAZED
SLIDING DOOR TO
ALLOW ROOM TO BE
CLOSED OFF (LEAVE IN
HIGHLIGHT WINDOWS
ABOVE)

WOMEN'S WARD : UPDATED OPTION 2



OPTION 3:BRING
WINDOW OPENINGS
DOWN TO THE
GROUND TO CREATE
LONGER & LARGER
OPENINGS

WOMEN'S WARD : OPTION 3

ENTRY VERANDAH

FEEDBACK WAS:

- 1) THE ENTRY NEEDED TO DRAW MORE ATTENTION TO IT & PROVIDE MORE SENSE OF OCCASION- THE VERANDAH ROOF CAN STILL BE EXTENDED OUT TO THE WEST
- 2) THE TRUST STILL SUPPORTS THE OPERABLE COMPONENT OF THE FACADE



PREVIOUS ENTRY VERANDAH VIEW

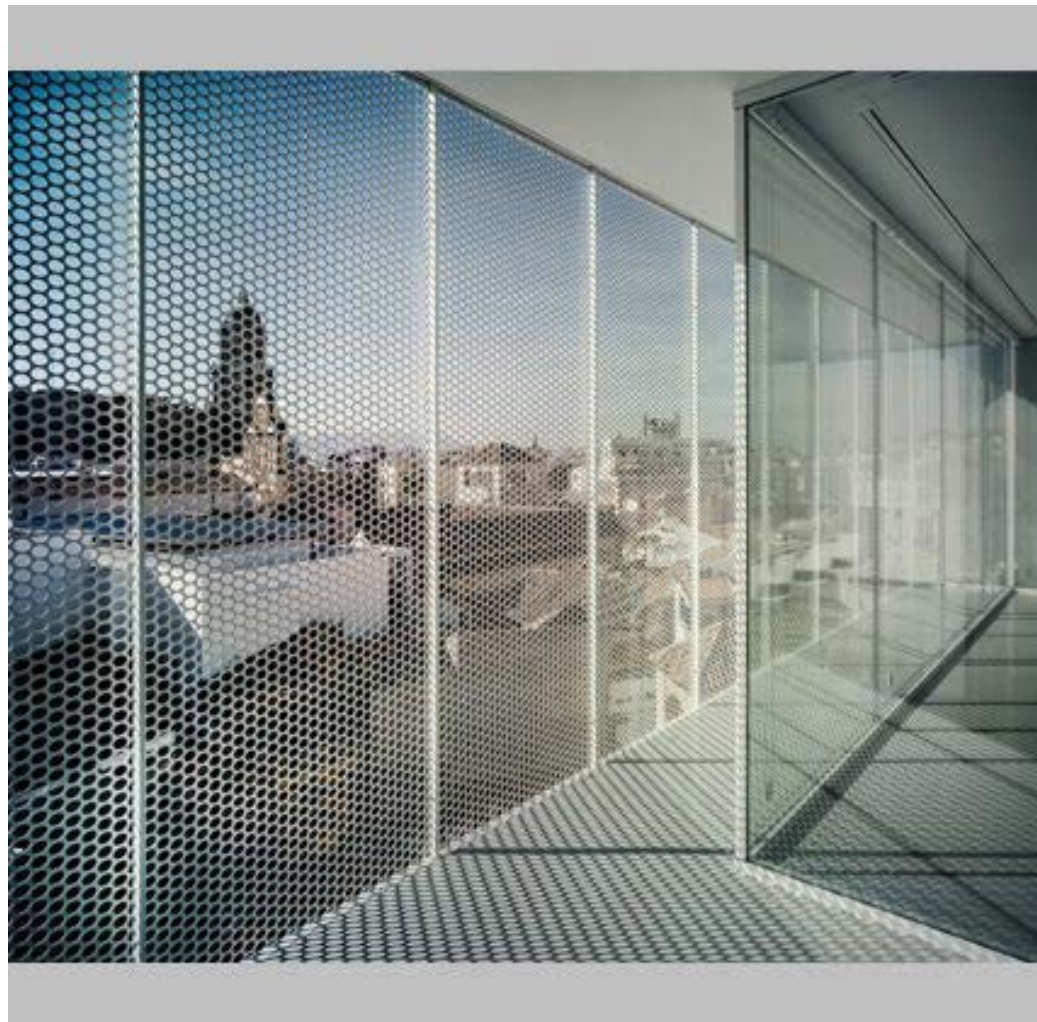


HISTORIC VERANDAHS

OPTION 01



OPTION 01: UPDATED ENTRY VERANDAH VIEW-CLOSED



EXAMPLES OF PERFORATED MESH SCREENS



OPTION 01:UPDATED ENTRY VERANDAH VIEW- OPEN



OPTION 01: UPDATED ENTRY VERANDAH VIEW-CLOSED



OPTION 01:UPDATED ENTRY VERANDAH VIEW-OPEN

WOMEN'S WARD VERANDAH

FEEDBACK WAS:

- 1) TRUST WOULD LIKE TO ELIMINATE THE ARCHED ROOFS AND INSTATE A SLIM PITCHED ROOF
- 2) THE FABRIC SHOULD BE SYMPATHETIC TO THE EXISTING HERITAGE FABRIC - TO BLEND AND BE SYMPATHETIC



OPTION 01:UPDATED WOMENS WARD VERANDAH VIEW



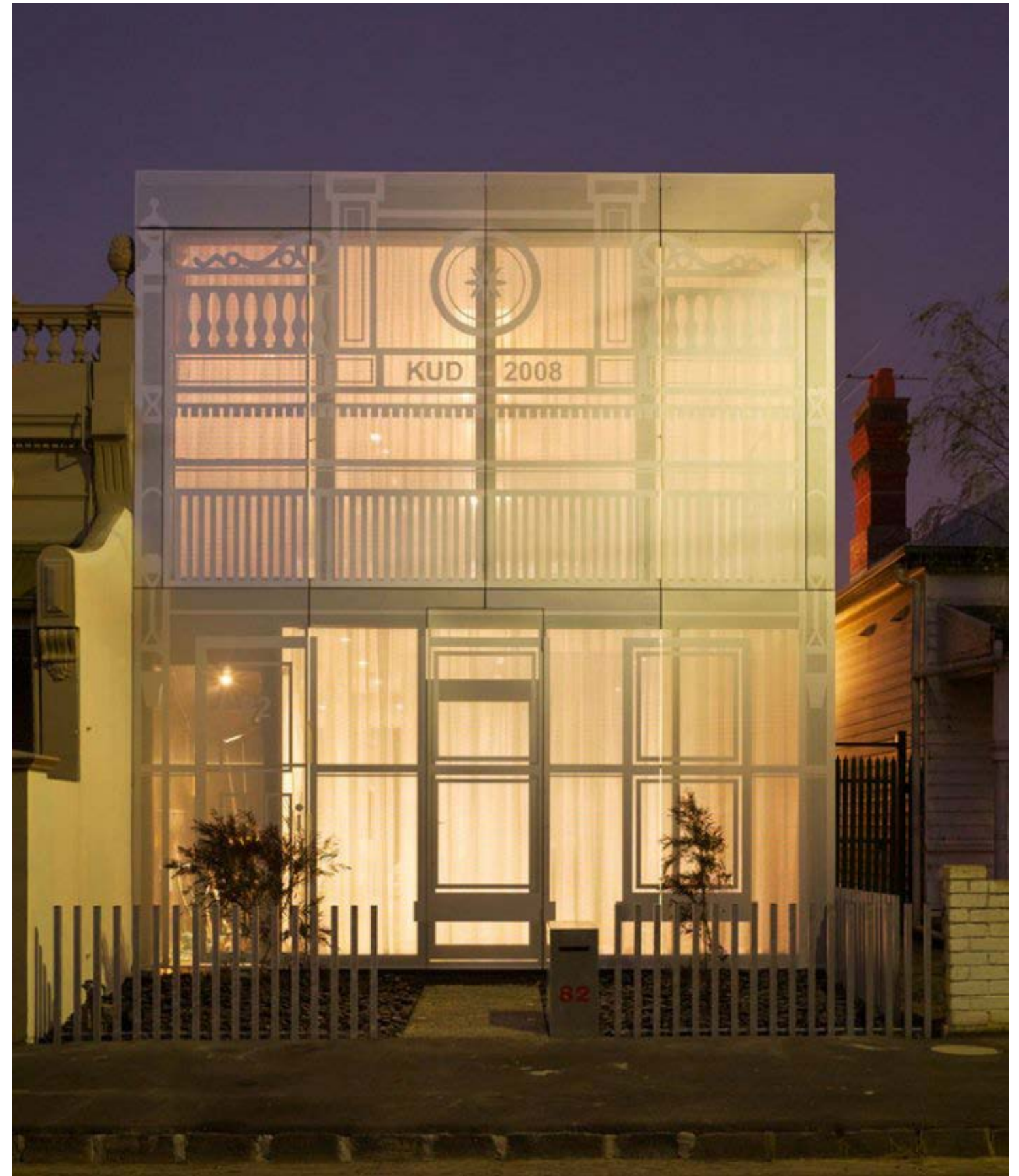
OPTION 01:UPDATED WOMENS WARD VERANDAH VIEW

OPTION 02





BECH HOSPITAL



HERITAGE IMPRINT ON PERFORATED METAL MESH



IMPRINT ON PERFORATED METAL MESH



OPTION 02: ENTRY VERANDAH VIEW-CLOSED



OPTION 02: ENTRY VERANDAH VIEW-OPEN



OPTION 02: ENTRY VERANDAH VIEW-OPEN

SOUTHERN ENTRY

FEEDBACK WAS:

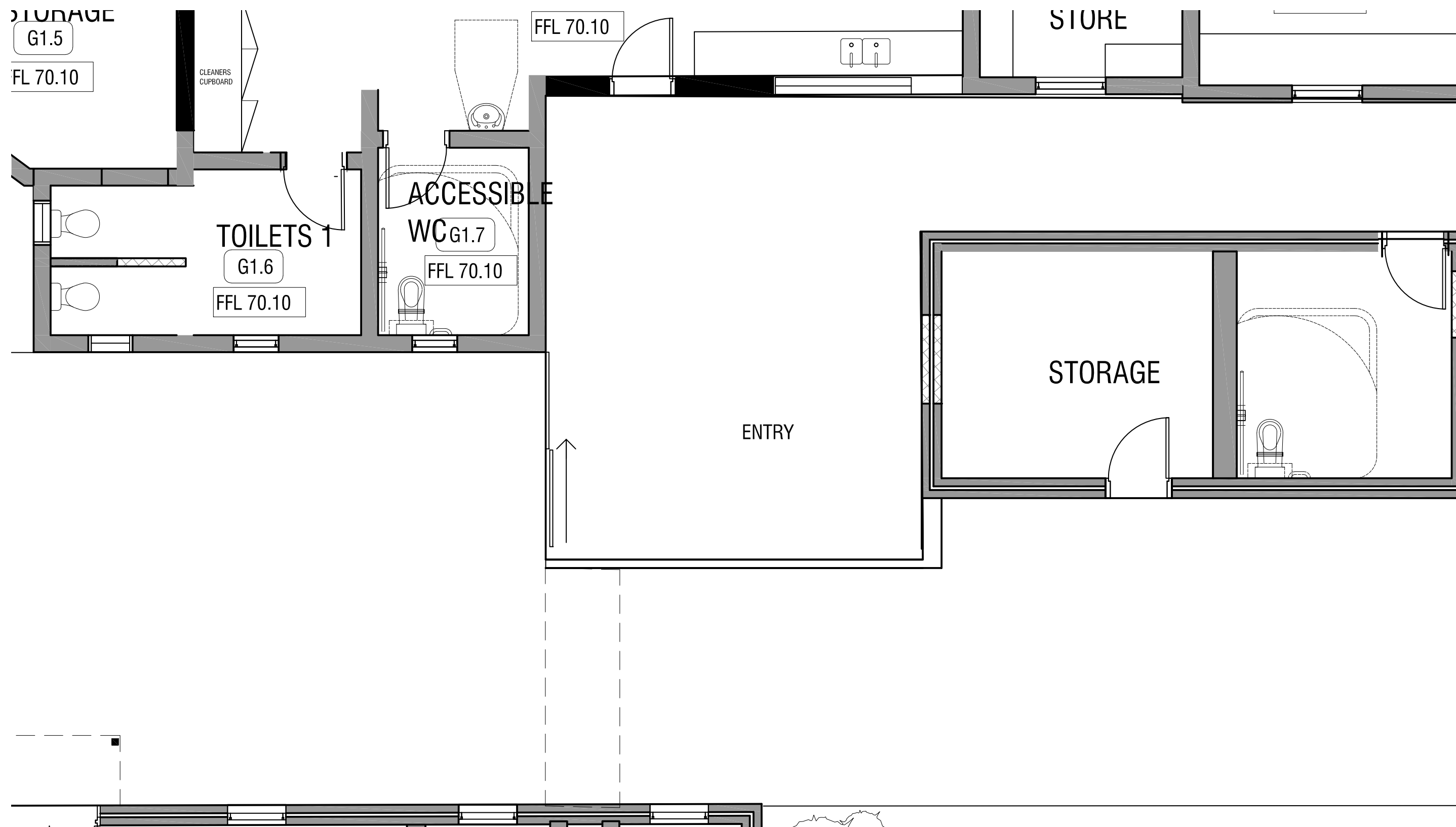
- 1) TRUST PREFERENCE IS FOR A CONNECTION BETWEEN MORGUE AND POTTERS
- 2) PREFERENCE WAS FOR OPTION 01 WITH ADDED PATH THROUGH THE OPEN



PREVIOUS SOUTHERN ENTRY VIEW OPTION 1



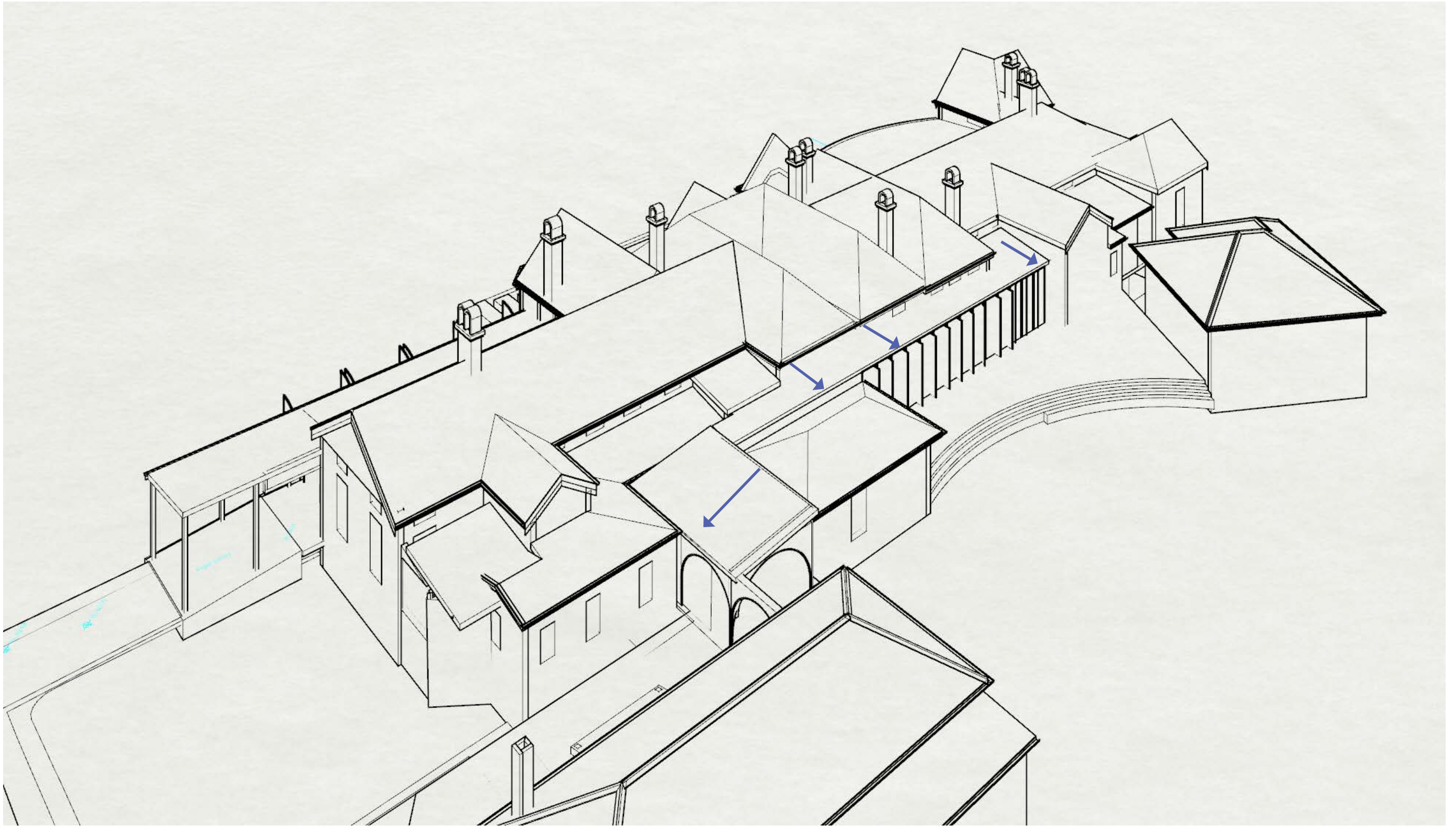
UPDATED SOUTHERN ENTRY VIEW OPTION 1



SLIDING GLASS DOOR TO SOUTHERN ENTRY

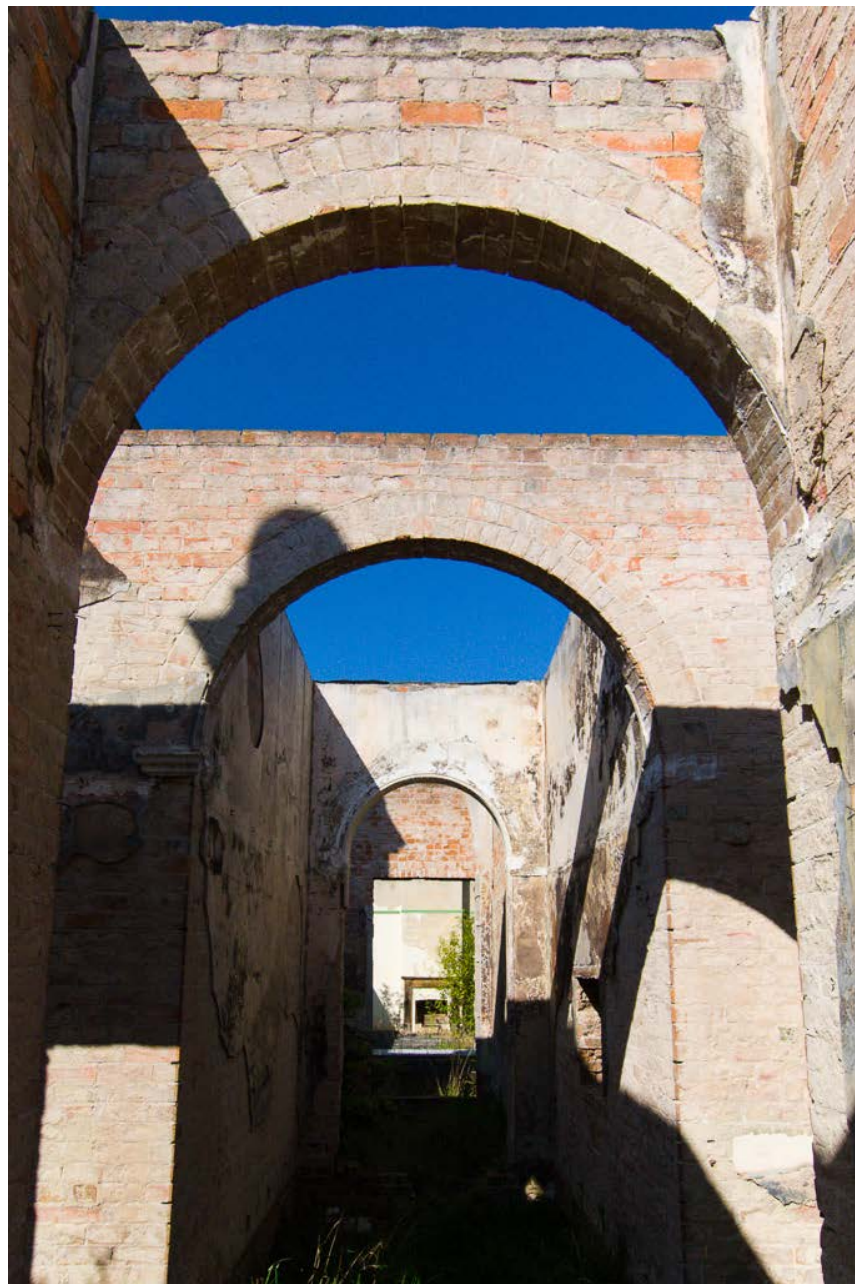
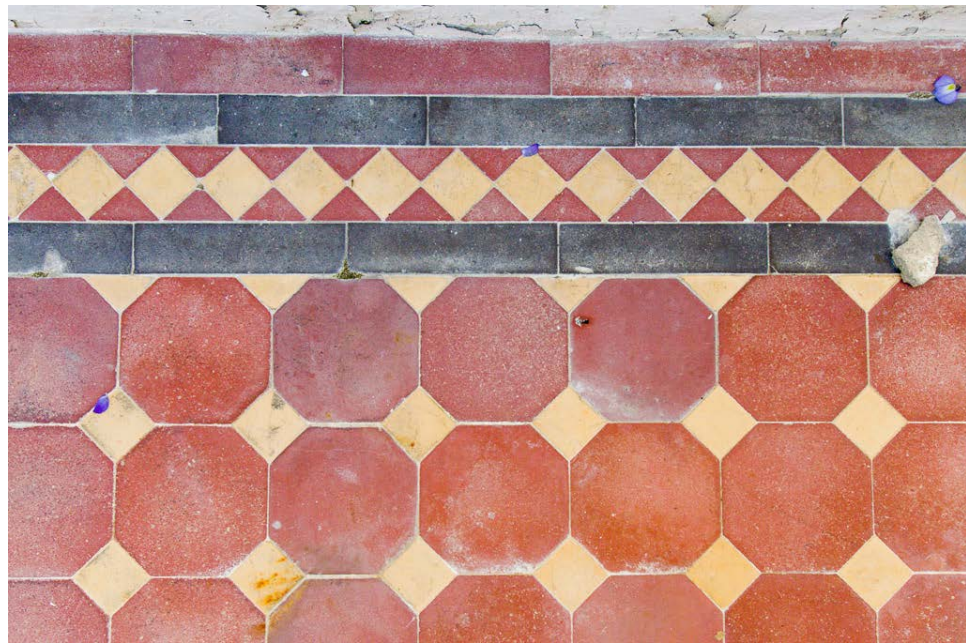


EXISTING ROOF CONFIGURATION

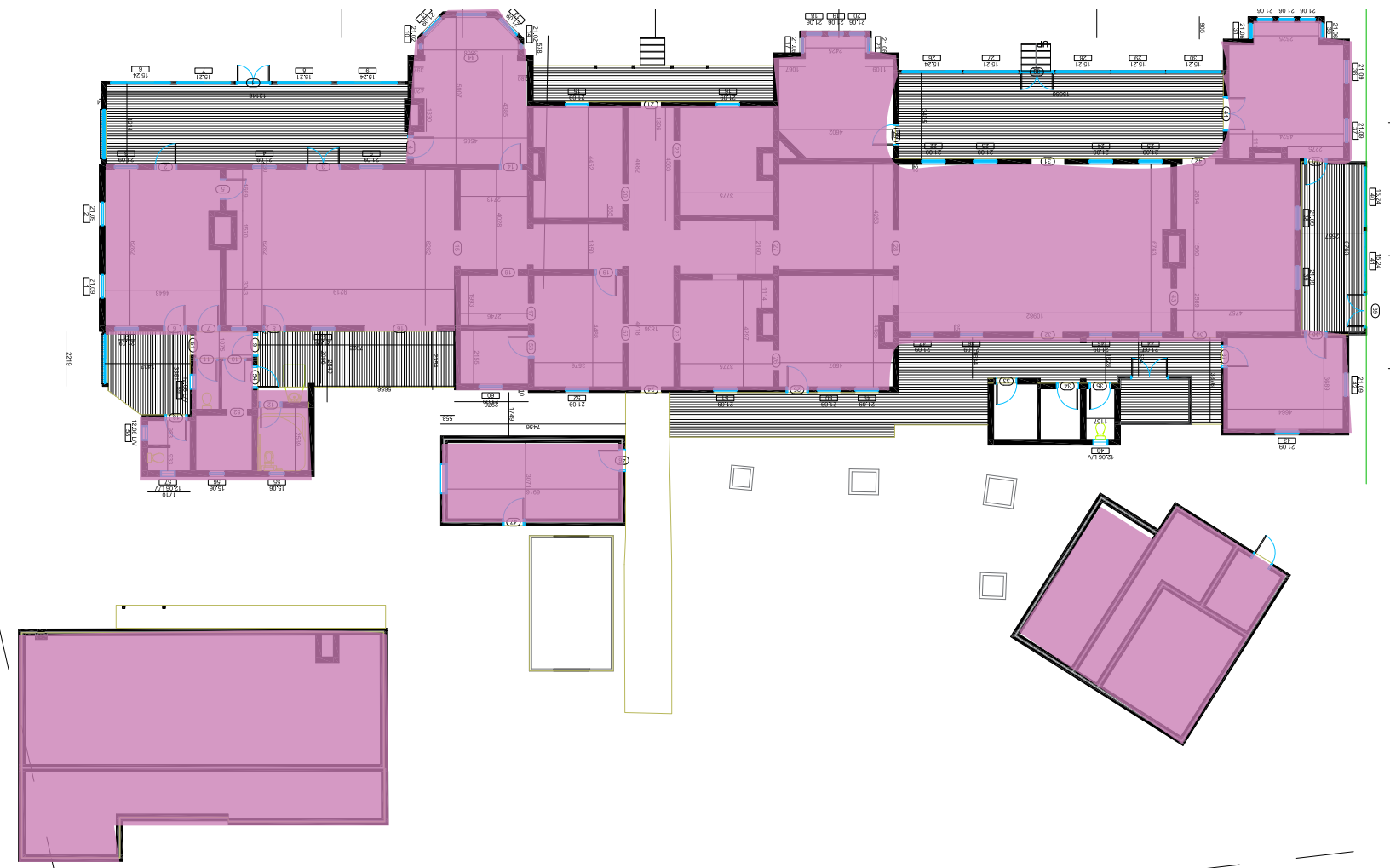


PROPOSED ROOF CONFIGURATION

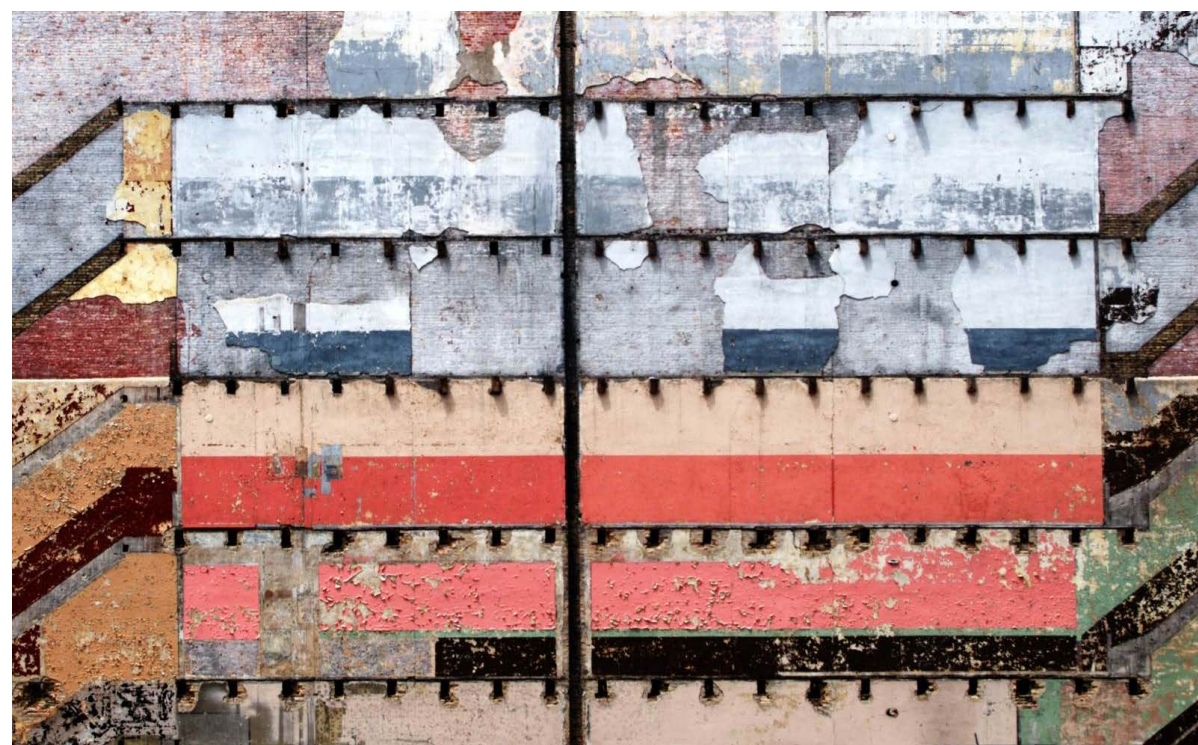
INTERIOR APPROACH



INTERIOR FEATURES OF BUILT FABRIC



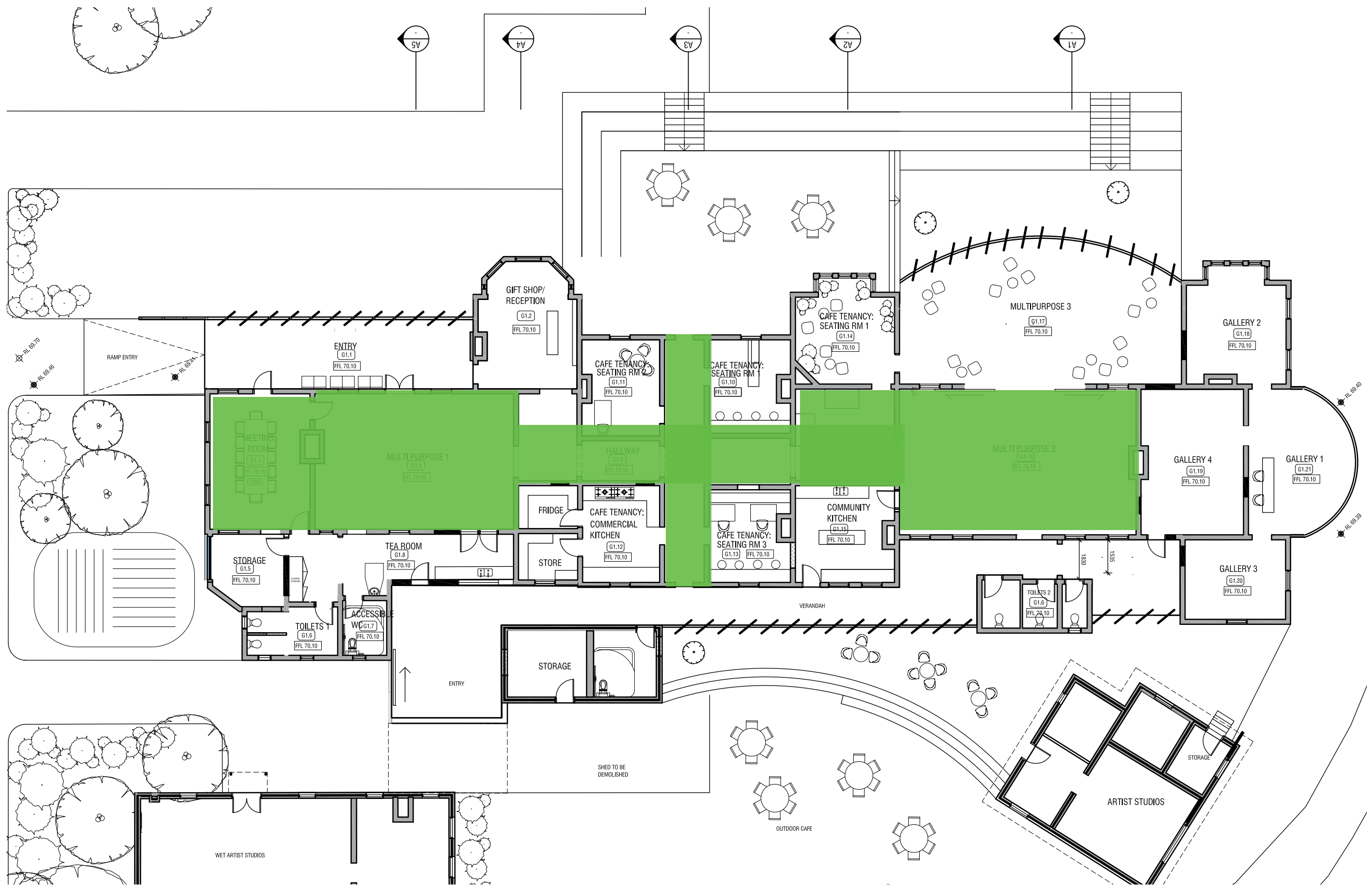
- Conservation of the interior spaces will retain features and fixtures where possible.
- Any building alterations will not detract from the cultural significance of the Old Bega Hospital
- The general structure, layout and dimensions of the main buildings or outbuildings will be retained and preserved
- Additions to the building will be done in order to bring the building up to date for current day use, and make the building relevant and functional.



Palimpsest
REVEALING THE PAST



HERITAGE WITH UPDATED FUNCTIONALITY

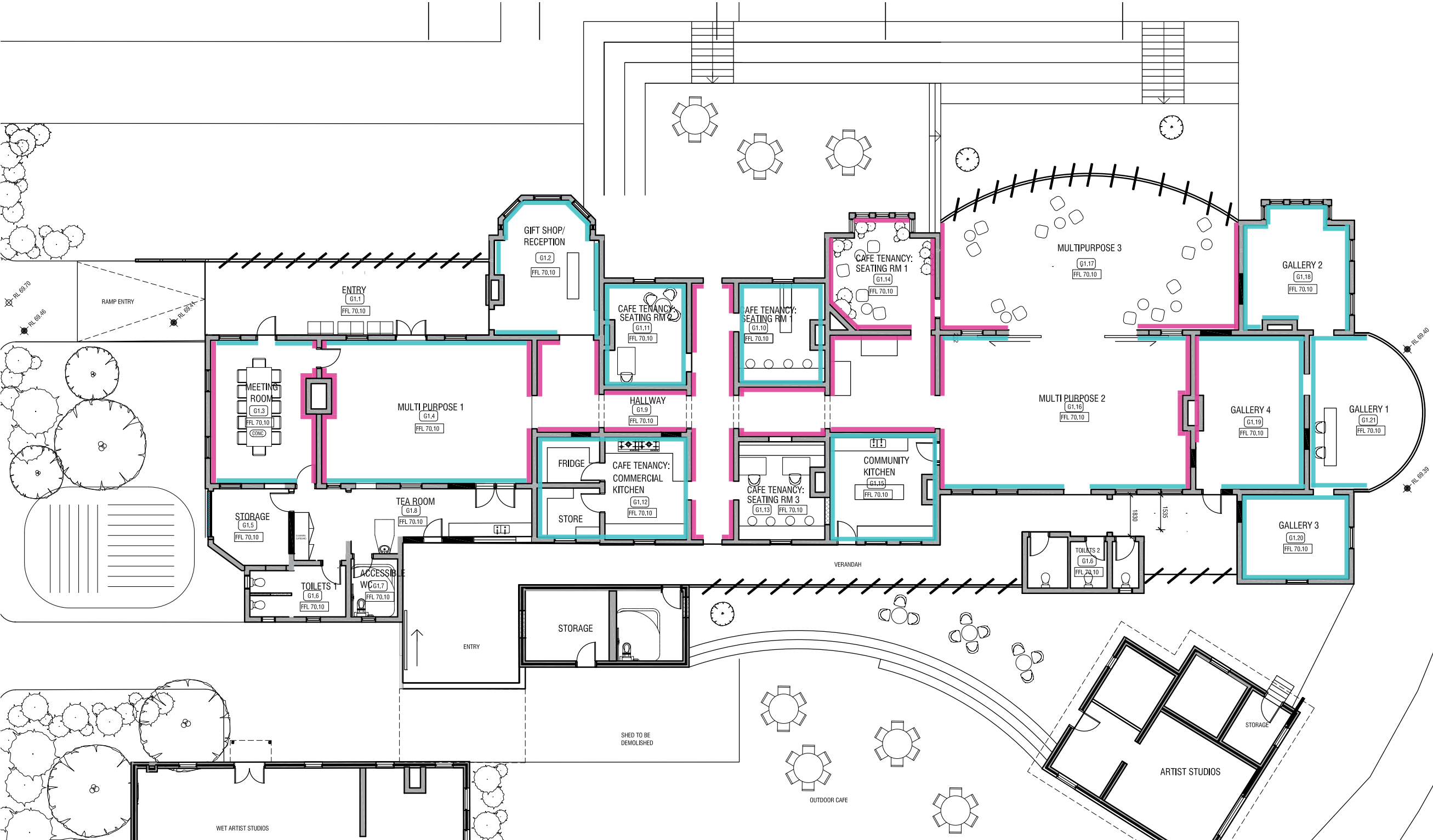


MAIN ZONE FOR DISCUSSION TODAY

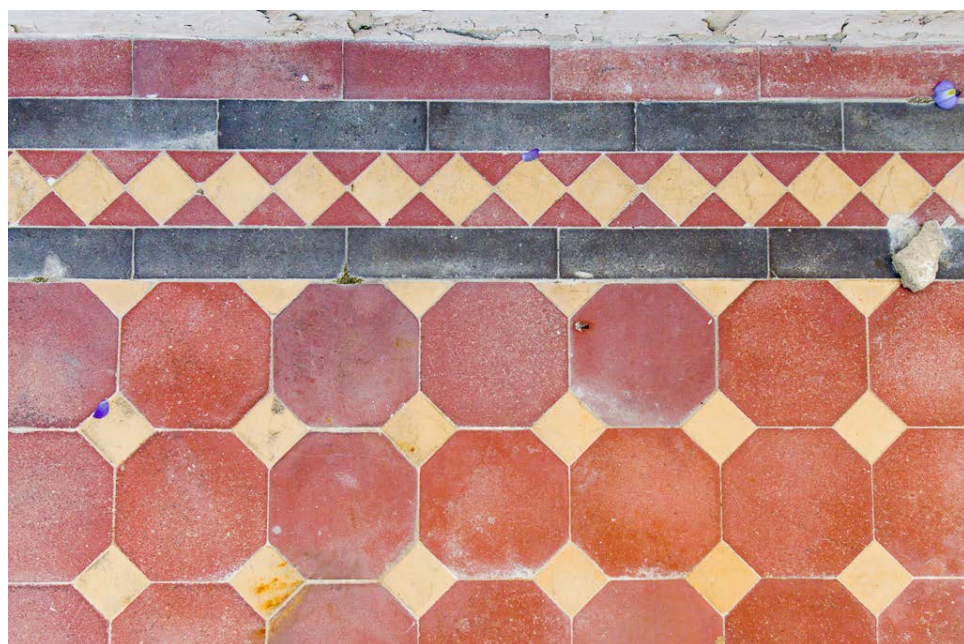


EXPOSED HERITAGE WALL FINISH

- new clean wall finish
- worn heritage wall finish



APPROACH TO WALLS

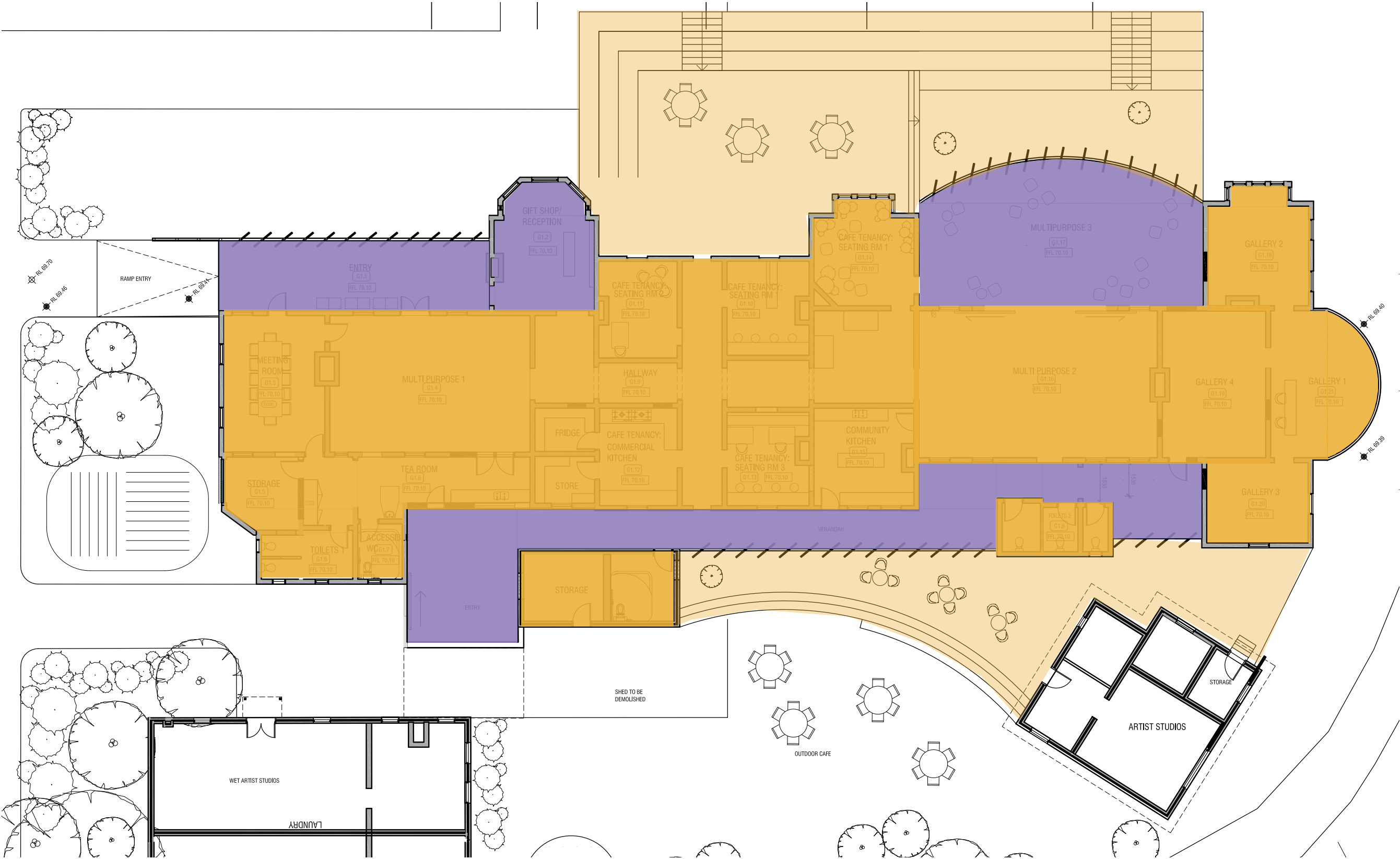


HERITAGE FLOORING

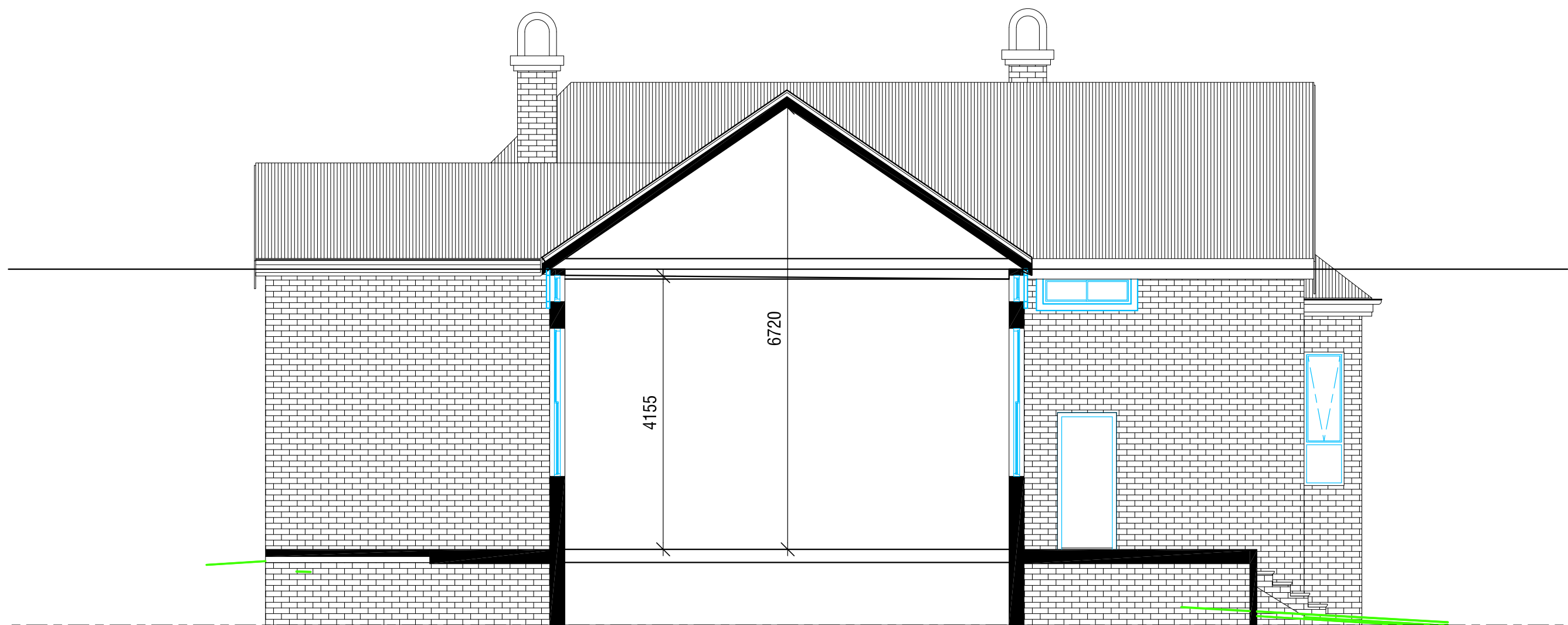


TILES/ VICTORIAN TILING

- tiled floor
- timber flooring



APPROACH TO FLOORING



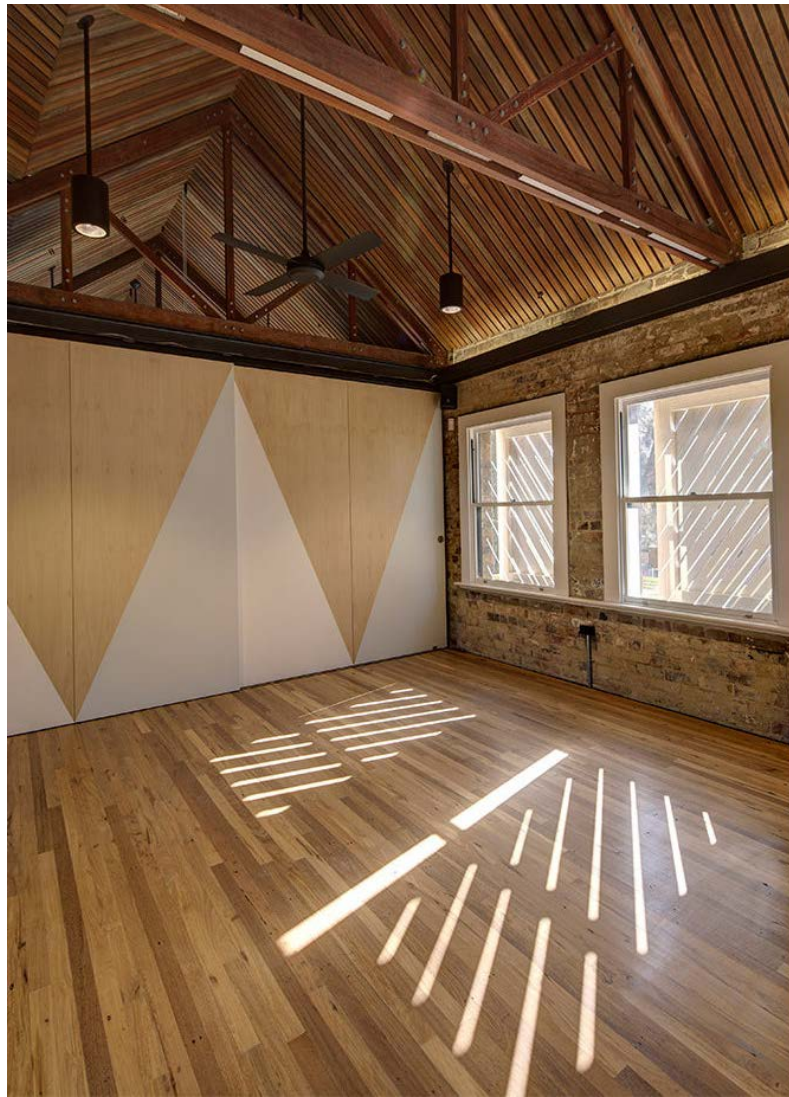
SECTION THROUGH WARD



POTENTIAL TO DRAW FROM PREVIOUS COLOUR SCHEMES



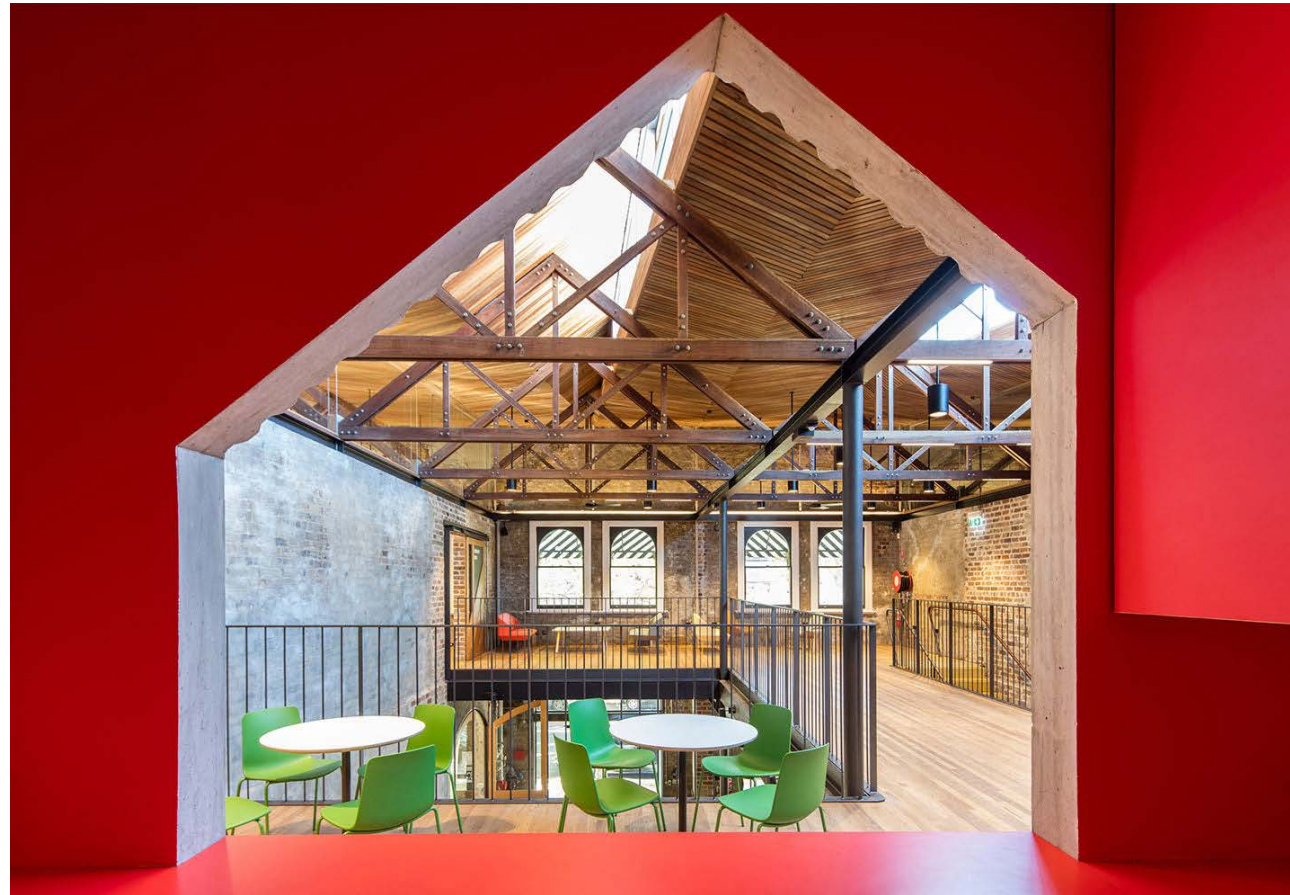
VIEW THROUGH WOMENS WARD-FLAT CEILING



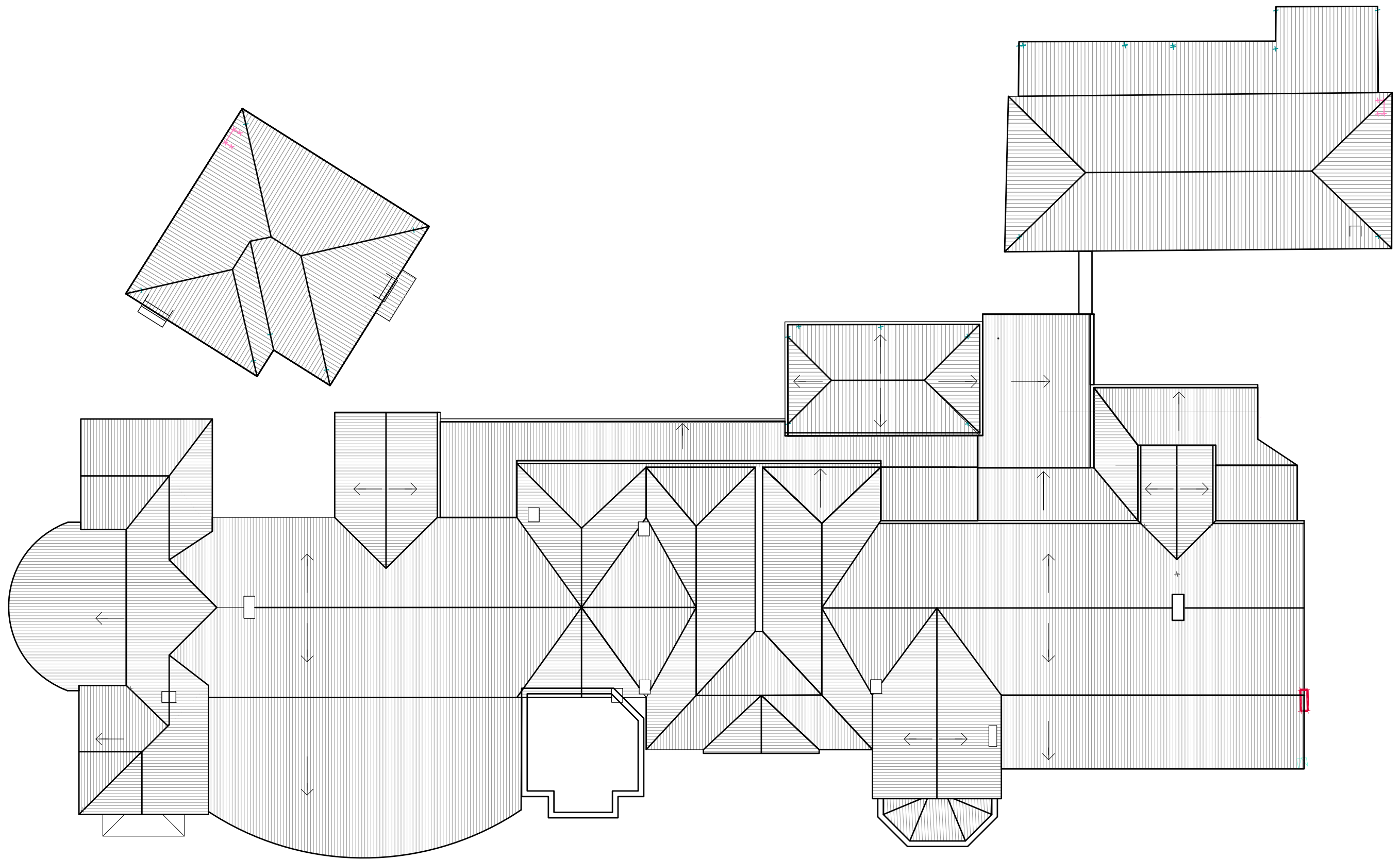
EXPOSED TRUSSES



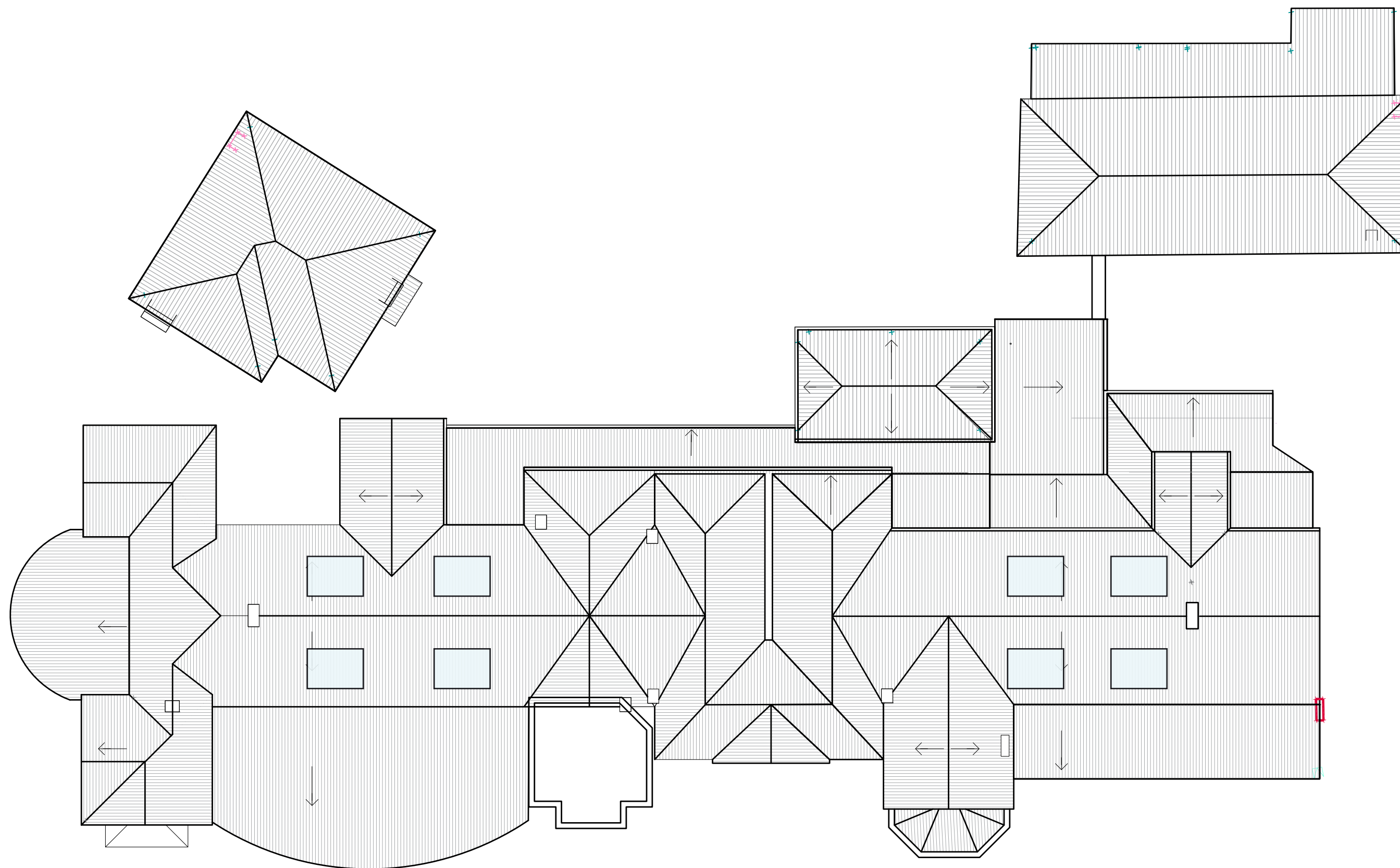
VIEW THROUGH WOMENS WARD-EXPOSED TRUSSES



POTENTIAL FOR SKYLIGHTS



EXISTING ROOF PLAN



POSSIBLE SKYLIGHTS



VIEW THROUGH WOMENS WARD-EXPOSED TRUSSES WITH SKYLIGHTS