

The background image shows a weathered brick building with a prominent arched window. The bricks are a mix of red and brown tones, with some mortar missing. A green tree is visible through the archway. The sky is a clear, bright blue. The text is overlaid on the right side of the image.

SIBLING
ARCHITECTURE

OLD BEGA HOSPITAL
ARTS & CULTURAL CENTRE

CONCEPT DESIGN REVIEW 04
21.12.2017

01 WHERE WE LEFT OFF

02 MASTERPLAN RE-VISIT

03 UPDATE FROM FEEDBACK



01 WHERE WE LEFT OFF

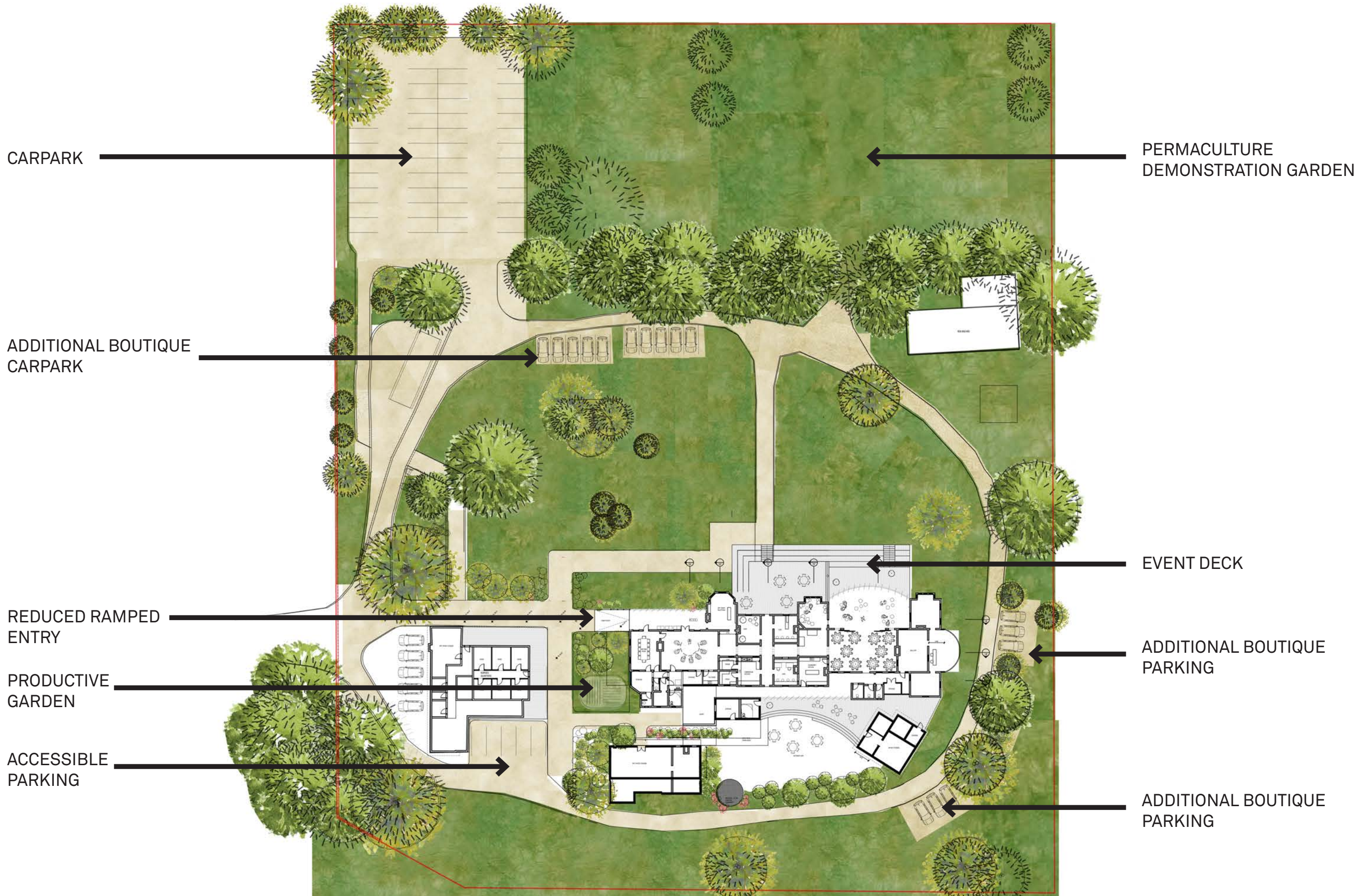


PREVIOUS VERANDAH APPROACH



SOUTHERN ENTRY VIEW

02 MASTERPLAN

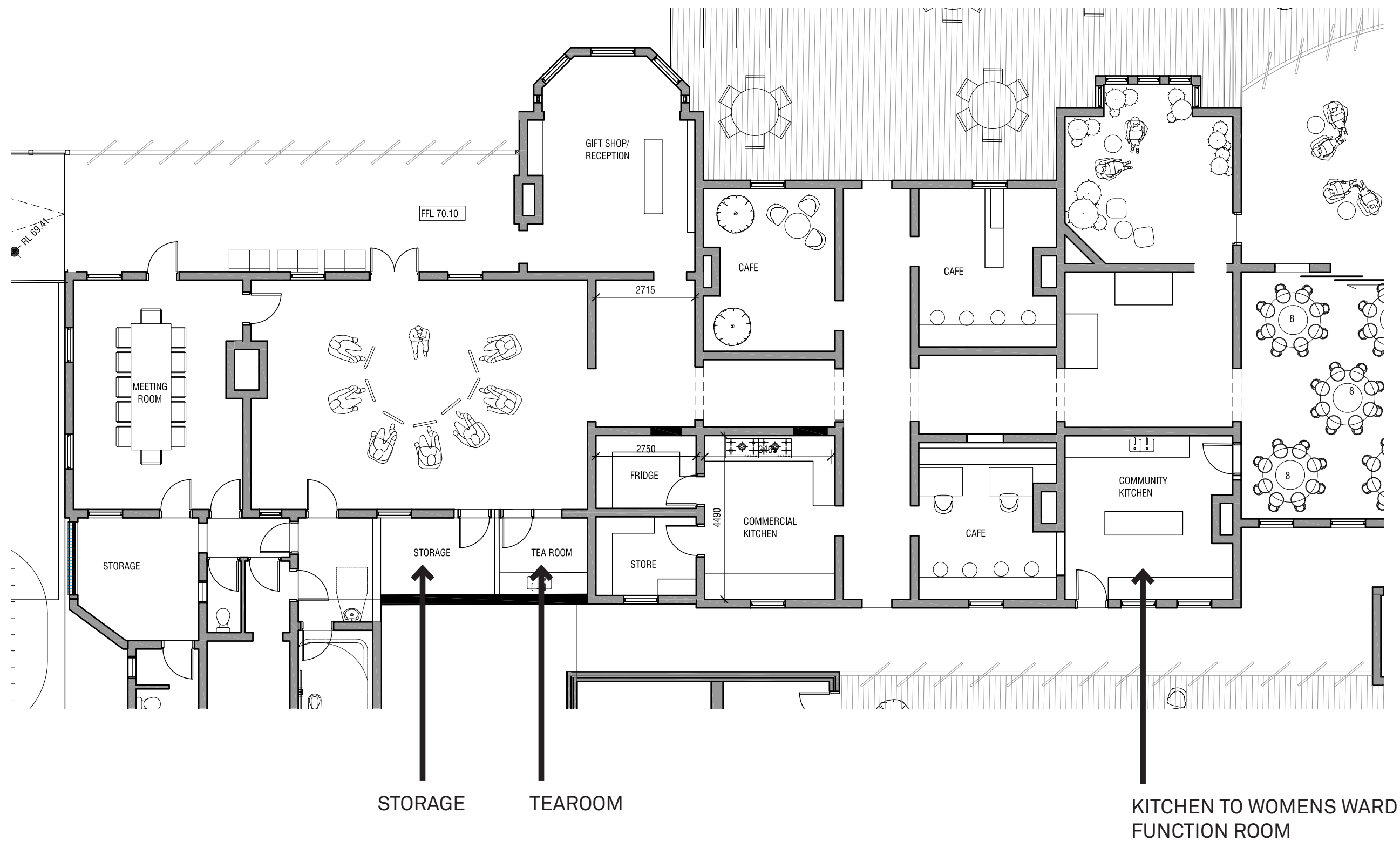


03 UPDATE FROM FEEDBACK

PLANNING UPDATES

FEEDBACK WAS:

1) TO INSTATE COMMUNITY KITCHEN ADJACENT TO WOMENS WARD.



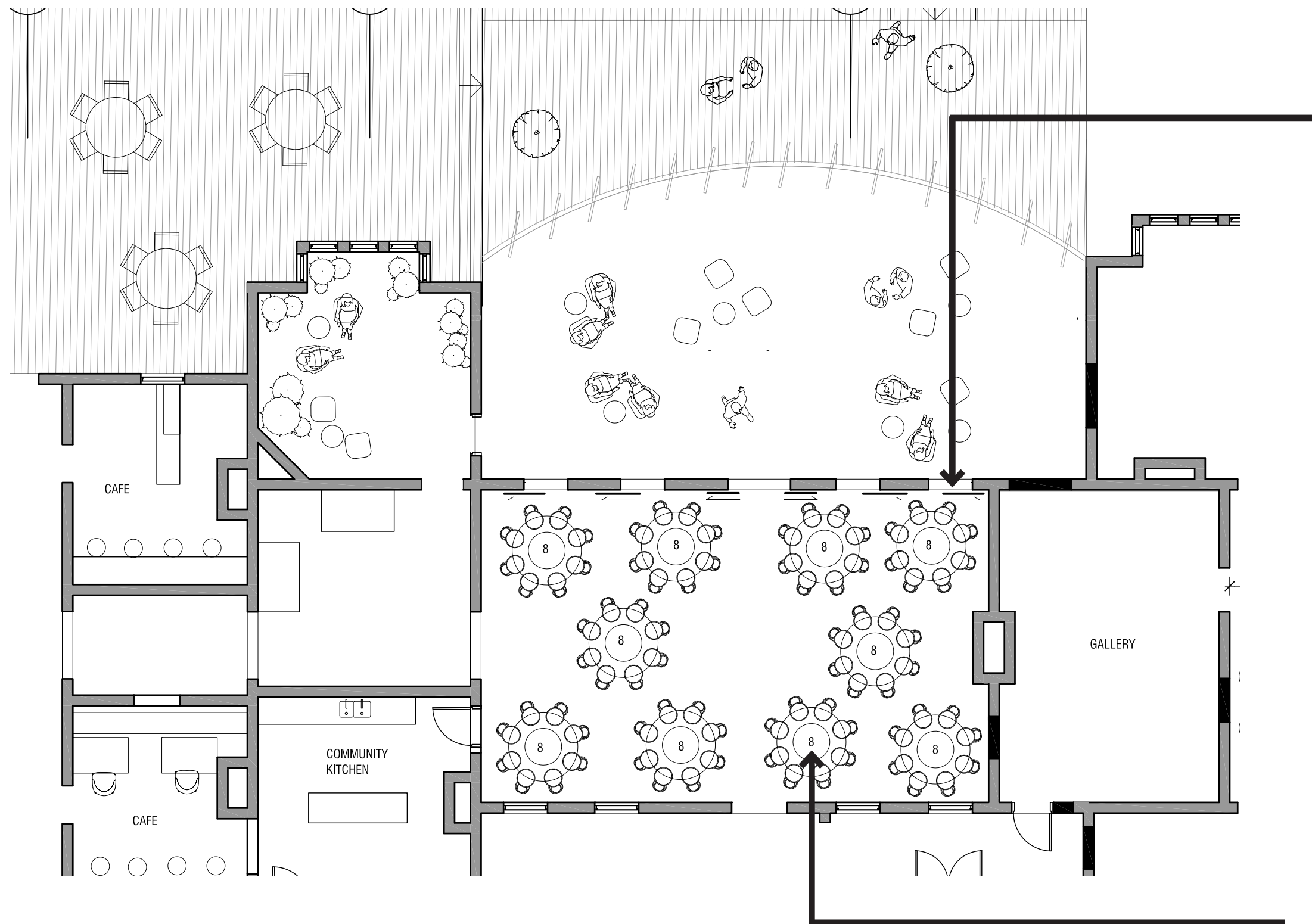
PLAN SHOWING KITCHEN CHANGES

WOMEN'S WARD

FEEDBACK WAS;

1) TO THINK ABOUT WAYS OF INCREASING
CONNECTIVITY BETWEEN INTERNAL
WOMENS WARD AND NEW VERANDAH
EVENT SPACE

OPTION 01



OPTION 1: MAINTAIN
THE EXTENT OF
BRICKWALL & HAVE
OPENABLE WINDOWS
& DOORS TO CREATE
CONNECTION
BETWEEN ROOMS

ALTEKATIVE LAYOUT
TO FIT 80 SEATS

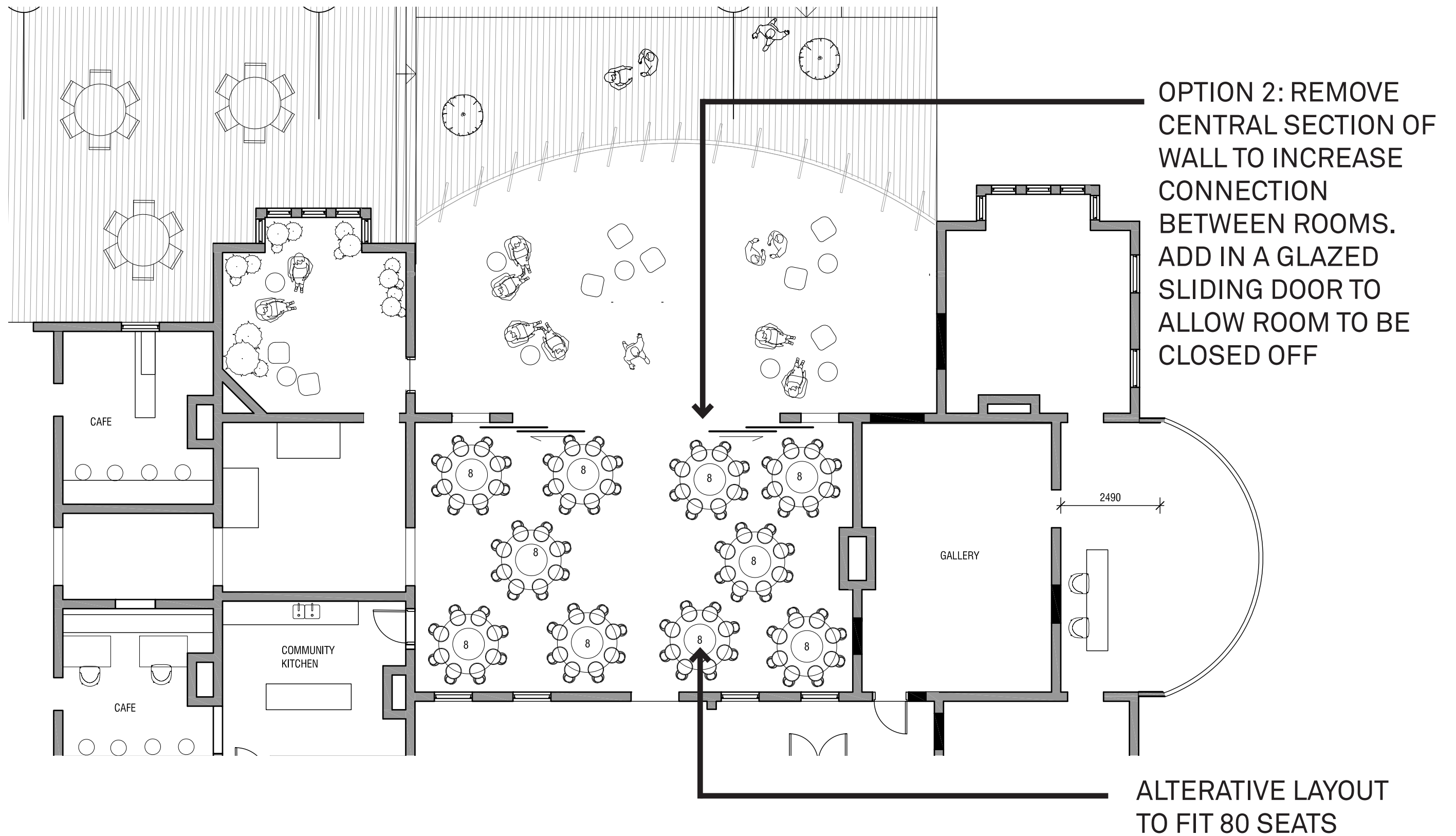
WOMEN'S WARD: OPTION 1



OPTION 1: MAINTAIN
THE EXTENT OF
BRICKWALL & HAVE
OPENABLE WINDOWS
& DOORS TO CREATE
CONNECTION
BETWEEN ROOMS

WOMEN'S WARD: OPTION 1

OPTION 02



WOMEN'S WARD : OPTION 2



OPTION 2: REMOVE
CENTRAL SECTION OF
WALL TO INCREASE
CONNECTION
BETWEEN ROOMS.
ADD IN A GLAZED
SLIDING DOOR TO
ALLOW ROOM TO BE
CLOSED OFF

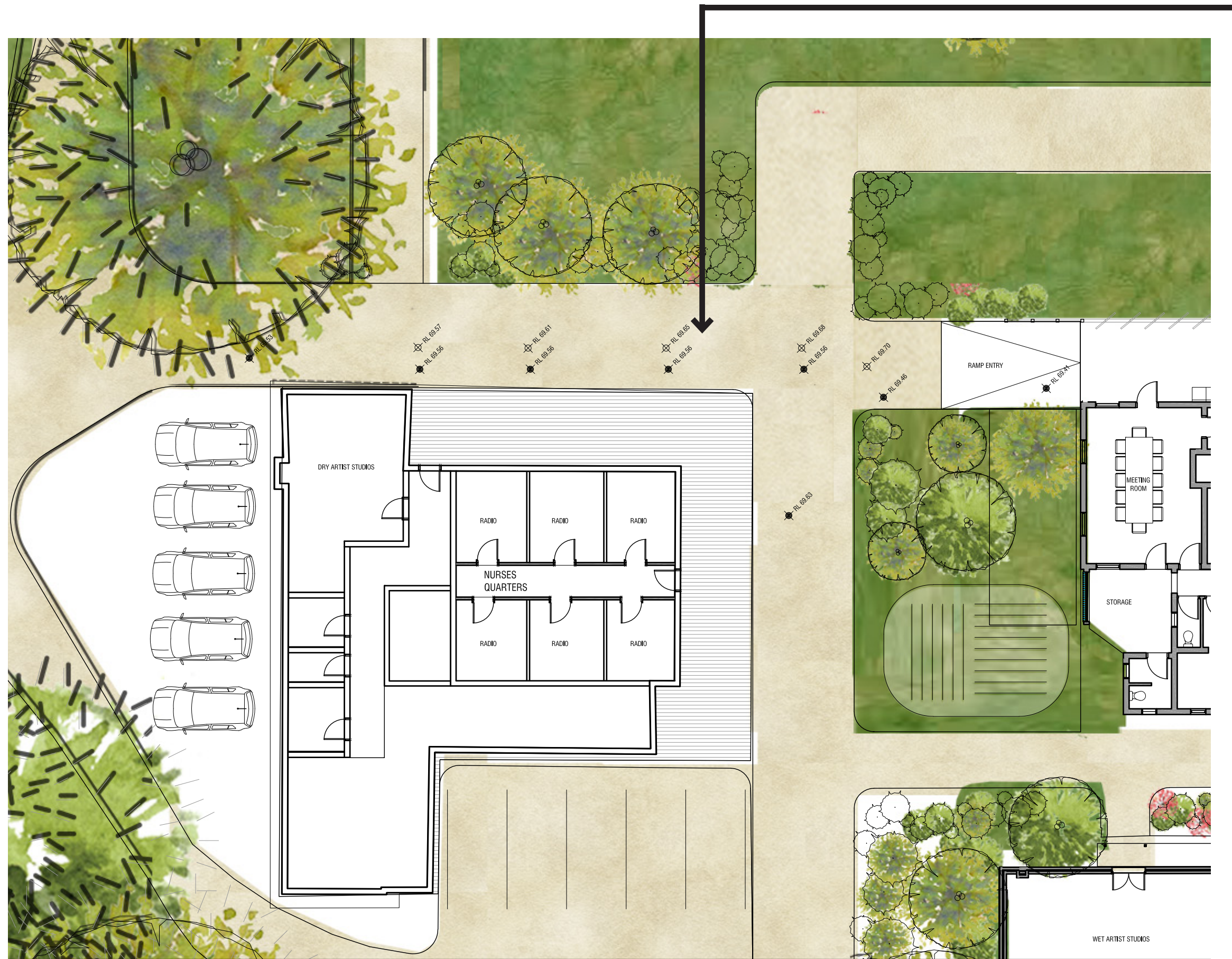
WOMEN'S WARD : OPTION 2

ENTRY VERANDAH

FEEDBACK WAS:

1) TO RECONFIGURE THE ENTRY RAMP TO
REDUCE ITS DISTANCE

2) TO SIMPLIFY THE BUILDING STRUCTURE
TO REPLICATE THE PAST



WE HAVE GRADUALLY MAINTAINED AND RAISED THE LEVEL FROM THE WESTERN ENTRY POINT ACROSS THE PATH TO THE ENTRY POINT OF THE OBH. THIS MEANS THE LEVEL OF THE PATH WHERE THE RAMP BEGINS IS HIGHER - THIS SOLUTION SIGNIFICANTLY REDUCES THE LENGTH REQUIRED FOR THE RAMP

WE STRONGLY RECOMMEND THE RAMP AND ENTRY NEEDS TO REMAIN FACING WEST AS THIS CONFIGURATION WAS CREATED TO CAPTURE ENTRY FROM THE WEST. TURNING THE RAMP TOWARD THE SOUTH MEANS THE ENTRY BECOMES TOO CLOSE TO THE OTHER SOUTHERN ENTRANCE

ENTRY VERANDAH

RAMP LENGTH REDUCED AND HISTORICAL
PAST IS RECREATED AS PER YOUR FEEDBACK.



UPDATED ENTRY VERANDAH VIEW

SOUTHERN ENTRY

FEEDBACK WAS:

1) CONSIDER EXTENDING ENTRY
TO THE POTTERS BUILDING

2) REDUCE HEIGHT OF NEW ENTRY
FORM TO MATCH EXISTING HEIGHT

EXTENSION OF ROOF TO POTTERS WILL BLOCK LIGHT GOING INTO THIS BUILDING AND OBSCURE VIEW TO SOUTHERN COURTYARD THIS ALSO IMPEDES 360 DEGREES BUILDING ACCESS. SIBLING DOES NOT THINK THIS IS NECESSARY.



UPDATED SOUTHERN ENTRY VIEW OPTION 1

OPTION FOR THE MATERIAL TO THE EXTENSION TO
REFERENCE THE HISTORICAL PAST



UPDATED SOUTHERN ENTRY VIEW OPTION 2

OPTION FOR THE MATERIAL TO THE EXTENSION TO
REFERENCE THE HISTORICAL PAST



UPDATED SOUTHERN ENTRY VIEW OPTION 3

FORM HAS BEEN UPDATED TO REDUCE HEIGHT OF ENTRY TO MATCH EXISTING BUILDING. THE ADJACENT BUILDINGS WERE PREVIOUSLY A MORGUE AND OTHER AMENITIES AND THEREFORE HAVE COMPARATIVELY LOW CEILING HEIGHTS. TO MATCH THESE MAKES THE NEW ENTRY ROOF QUIET LOW AND WOULD RESULT IN A CEILING HEIGHT OF 2400 - 2500MM. WE ADVISE THIS IS QUITE LOW FOR AN ENTRY POINT.



UPDATED SOUTHERN ENTRY VIEW OPTION 4

HERE THE ROOF HEIGHT IS HIGHER THAN THE ADJACENT OUTHOUSE BUT STILL MUCH LOWER THAN THE MAIN BUILDING ROOF. THIS WILL ALLOW THE CEILING HEIGHT OF 3000MM. WE FEEL THIS IS MORE APPROPRIATE

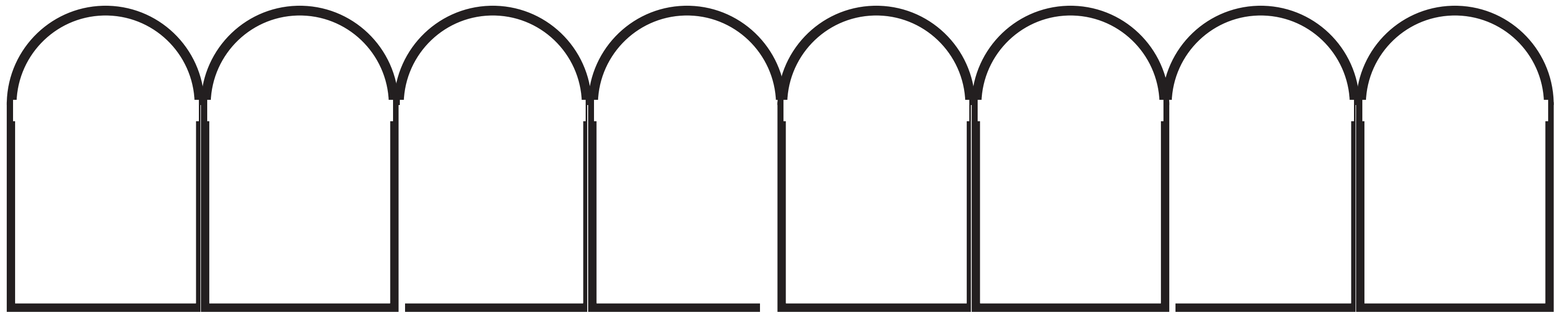
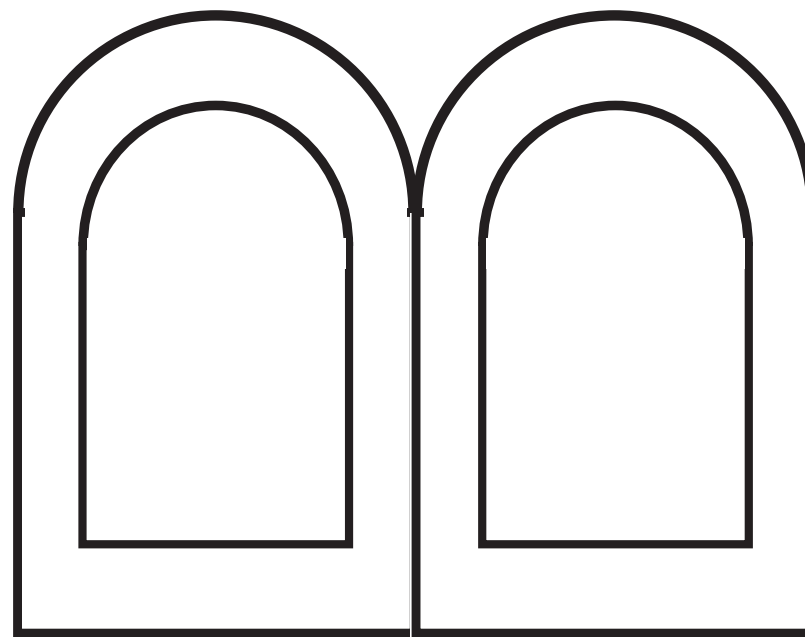
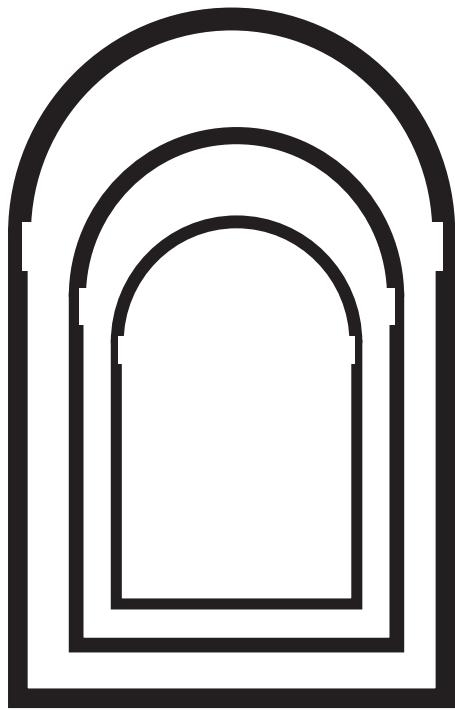


UPDATED SOUTHERN ENTRY VIEW OPTION 5

WOMEN'S WARD VERANDAH

FEEDBACK WAS:

- 1) TRUST ACCEPTED THAT A NEW APPROACH
WAS REQUIRED HERE DUE TO HEAD HEIGHT
- 2) TRUST FELT THAT ARCHES WERE TOO
NARROW AND ASKED SIBLING TO REVISE THIS



APPROACH OF ARCHES TO DRAW FROM
EXSISTING BUILT FORM

OPTION 01

SCALE OF ARCHES HAS BEEN
REDESIGNED TO A BROADER PROFILE



OPTION 01 - LARGER ARCHES

SCREEN CAN STILL
OPEN AND CLOSE

REPLICATION OF
HISTORICAL PAST



OPTION 01 - LARGER ARCHES

SCALE OF ARCHES HAS BEEN
REDESIGNED TO A BROADER PROFILE



OPTION 01 - LARGER ARCHES

SCREEN CAN STILL OPEN AND CLOSE



OPTION 01 - LARGER ARCHES

OPTION 02

PREVIOUS SMALLER ARCH SIZE REQUIRES LESS VERTICAL
HEIGHT ALLOWING LIGHT INTO HIGHER NORTHERN
WINDOWS. SIBLING PREFERS THIS OPTION



OPTION 02 - PREVIOUS SIZED ARCHES



OPTION 02 - PREVIOUS SIZED ARCHES

PREVIOUS SMALLER ARCH SIZE REQUIRES LESS VERTICAL HEIGHT ALLOWING
LIGHT INTO HIGHER NORTHERN WINDOWS. SIBLING PREFERS THIS OPTION



OPTION 02 - PREVIOUS SIZED ARCHES



OPTION 02 - PREVIOUS SIZED ARCHES